

MICHELIN AUTOMOTIVE ACCESSORIES

2021 Range



THE MICHELIN BRAND

Michelin is determined to share the adventure of better mobility with everyone.

With its extraordinary capital of trust and affinity, Michelin ranks among the world's greatest brands. Its values - boldness, dedication and generosity - are reflected in both its words and actions. Throughout its history, Michelin's growth has been fueled by technical innovation.

Enhancing the mobility of people and goods requires an uncompromising attitude toward the safety and quality of every product and service.

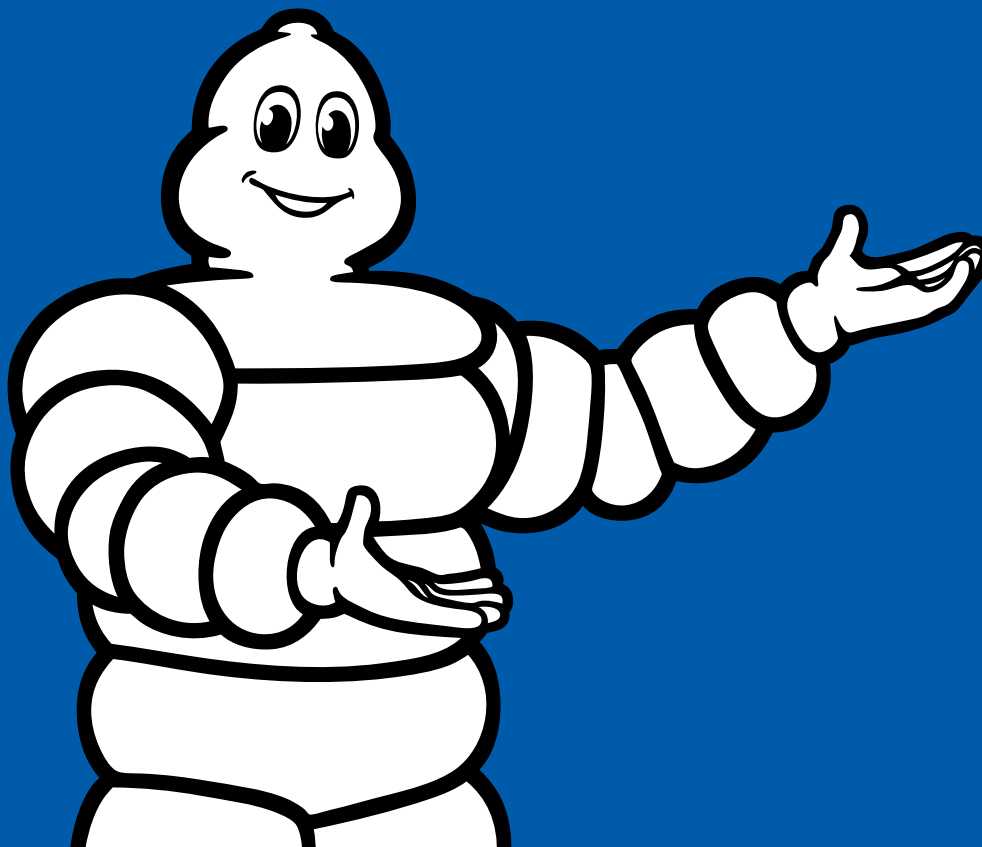
The Michelin Man is the symbol of the MICHELIN brand and has been its standard bearer all over the world since 1898. His enduring popularity, his presence among his audience and the spirit that has always been his driving force led him to be voted "Best Brand Symbol Ever" (Source: Financial Times, 2000) and "Icon of the millennium" (Source: Advertising Week, 2018).

Michelin is ranked 3rd world's best brand in terms of trust (Source: Kantar Millward Brown, 2019).

Michelin is ranked 8th in the list of the brands with the best reputation in the world (Source: Global RepTrak® 100, 2019).

Best tyre manufacturer (Source: Tire Technology Expo, 2020).

30 million Michelin Lifestyle products were sold worldwide in 2019 (Source: Michelin Lifestyle Ltd. 2020).



ML DIRECT

ML Direct introduces high quality MICHELIN branded products to new customers everyday, all over the world.

Identifying and working closely with the best retail, on-line and distribution partners in each market, we work hard to understand customer needs and to match this with the correct MICHELIN branded product offer.

Our focus is on delivering the best quality products to our customers worldwide and to backing that with world class customer service.

Our New Product Development Team is constantly looking for ways to innovate and develop new products with a focus on performance and sustainability.

Our products keep you safer on the road and protect your vehicle.

Customers *Driving* **Vision**
Trust
Growth **Innovative** **Bespoke**
Environmental **Heritage** *Honest*
Agile *Digital*
Quality *Value* **Adaptable**
Happy *Smart* *Service* *Sustainable*



WHEEL OF RANGES

MICHELIN branded automotive accessories are a “must-have” for automotive retailers and offer a breadth of products unrivalled in the category.

While ML Direct offers MICHELIN branded products in many auto accessories segments the core offer includes:

Wiper Blades - A global best seller utilizing MICHELIN know-how to enhance passenger safety and mobility.

Automotive Lighting - Improved vision makes for a safer driving experience.

Air Care - Everyone loves Bibendum and you can have him as a travel companion with our natural scented air freshener range.

Floor Mats - As a rubber specialist Michelin has been making car mats for many years.

Inflation - As a global leader in tyre market, MICHELIN knows the importance of the correct tyre pressure for increased road safety and economy.

Automotive Chemicals - Performance with sustainability is key in our wide range of auto chemicals from Clean Air products to tyre shine.

These core product groups are the base for our global distributors to build a long term and sustainable brand presence in their local markets.



INFLATION

This innovative range of tyre gauges, foot pumps and inflators delivers superior, dependable performance and are easy to use. Maintaining the correct air pressure in tyres is extremely important to maximise tyre performance and fuel efficiency while increasing passenger safety and comfort.



MICHELIN DIGITAL TYRE PRESSURE GAUGE WITH KEY RING

- Compact design.
- LED Flashlight.
- Large LCD display.
- Range: 5-99 PSI, 0.4-6.80 BAR, 40-680 kPa, 0.4-6.80 kg/cm².
- Accuracy: Pressure +/- 1 % (+ 1 LSD).



PSI/BAR/
KPA/KG/CM²



BATTERY
INCLUDED



LED LIGHT
NIGHT TIME
ILLUMINATION



Description	Model No.	EAN		Size (L/W/H)	Weight
Digital Tyre Pressure Gauge With Key Ring	12290	5060428030961		9.3 x 3.3 x 2 cm	0.04 kg
Packaging	MOQ	PCS/CTN	Weight	Size (L/W/H)	Carton CBM
Box	1.008	36	2.70 kg	33.3 x 31.5 x 2.4 cm	0.025

Changes in the interest of technical progress may mean the product varies from that shown here.

MICHELIN DIGITAL TYRE TREAD DEPTH & PRESSURE GAUGE WITH LCD

- Dual Function.
- Range: 5-99 PSI, 0.4-6.80 BAR, 40-680 kPa, 0.4-6.80 kg/cm².
- LED Flashlight.
- Tread depth gauge reads in mm / inch.
- Large white LCD display.
- Rubber finish for comfortable grip.
- Accuracy: Pressure +/- 1 % (+ 1 LSD).



PSI/BAR/
KPA/KG/CM²



BATTERY
INCLUDED



LED
LIGHT
NIGHT TIME
ILLUMINATION



Description	Model No.	EAN		Size (L/H/W)	Weight
Digital Tyre Tread Depth & Pressure Gauge With LCD	12292	5060428030985		9.3 x 5 x 2 cm	0.04 kg
Packaging	MOQ	PCS/CTN	Weight	Size (L/H/W)	Carton CBM
Box	1.008	36	3 kg	33.3 x 31.5 x 20.4 cm	0.021

Changes in the interest of technical progress may mean the product varies from that shown here.

MICHELIN PROGRAMMABLE TYRE PRESSURE GAUGE

- Programmable tyre pressure for 2 vehicles.
- Range: 5-99 PSI, 0.4-6.80 BAR, 40-680 kPa, 0.4-6.80 kg/cm².
- LED Flashlight.
- Bleed valve.
- Large white LCD display.
- Rubber finish for comfortable grip.
- Accuracy: Pressure +/- 1 % (+ 1 LSD).



PSI/BAR/
KPA/KG/CM²



BATTERY
INCLUDED



LED
LIGHT
NIGHT TIME
ILLUMINATION



Description	Model No.	EAN		Size (L/H/W)	Weight
Programmable Tyre Pressure Gauge	12294	5060428031005		15.6 x 4.5 x 2.4 cm	0.09 kg
Packaging	MOQ	PCS/CTN	Weight	Size (L/H/W)	Carton CBM
Box	1.008	12	2.8 kg	34 x 22.8 x 29 cm	0.022

Changes in the interest of technical progress may mean the product varies from that shown here.

MICHELIN DIGITAL TYRE TREAD DEPTH & PRESSURE GAUGE

- Dual function.
- Range: 5-99 PSI, 0.4-6.80 BAR, 40-680 kPa, 0.4-6.80 kg/cm².
- Tread depth gauge reads in mm / inch.
- Switchable between PSI, BAR & kPa.
- Large LCD display.
- Accuracy: Pressure +/- 1 % (+ 1 LSD).



PSI/BAR/
KPA/KG/CM²



BATTERY
INCLUDED



Description	Model No.	EAN		Size (L/H/W)	Weight
Digital Tyre Tread Depth & Pressure Gauge	MN-4203	5060428030008		7.4 x 4.7 x 2.3 cm	0.03 kg
Packaging	MOQ	PCS/CTN	Weight	Size (L/H/W)	Carton CBM
Box	1.008	36	3.3 kg	24.5 x 21.9 x 41 cm	0.22

Changes in the interest of technical progress may mean the product varies from that shown here.

MICHELIN ANALOGUE SINGLE BARREL FOOT PUMP

- Analogue gauge accurate to +/- 1 PSI (up to 50 PSI).
- Ergonomic rubber tread plate.
- Analogue display PSI, BAR & kPa.
- Wide footprint steel frame with rubber feet.
- Snap-in adaptor storage.



PSI / BAR / KPA



HOSE LENGTH



SINGLE BARREL



SNAP-IN ADAPTOR STORAGE



Description	Model No.	EAN		Size (L/H/W)	Weight
Analogue Single Barrel Foot Pump	12204	5060428030046		29.8 x 11.8 x 9 cm	1.78 kg
Packaging	MOQ	PCS/CTN	Weight	Size (L/H/W)	Carton CBM
Box	1.000	10	18.27 kg	49.5 x 25.5 x 33 cm	0.042

Changes in the interest of technical progress may mean the product varies from that shown here.

MICHELIN ANALOGUE DOUBLE BARREL FOOT PUMP

- Analogue gauge accurate to +/- 1 PSI (up to 50 PSI).
- Ergonomic rubber tread plate.
- Analogue display PSI, BAR & kPa.
- Wide footprint steel frame with rubber feet.
- Snap-in adaptor storage.



PSI / BAR / KPA



HOSE
LENGTH



DOUBLE
BARREL



SNAP-IN ADAPTOR
STORAGE



Description	Model No.	EAN		Size (L/H/W)	Weight
Analogue Double Barrel Foot Pump	12206	5060428030053		29.8 x 17.8 x 9 cm	2.44 kg
Packaging	MOQ	PCS/CTN	Weight	Size (L/H/W)	Carton CBM
Box	1,000	6	14.86 kg	37 x 31.5 x 32.5 cm	0.038

Changes in the interest of technical progress may mean the product varies from that shown here.

MICHELIN DIGITAL SINGLE BARREL FOOT PUMP

- Digital gauge accurate to +/- 1 PSI (up to 50 PSI).
- Ergonomic rubber tread plate.
- Switchable between PSA, BAR & kPa.
- Wide footprint steel frame with rubber feet.
- Snap-in adaptor storage.



UNIQUE
DIGITAL GAUGE



PSI / BAR / KPA



67 CM
HOSE
LENGTH



Description	Model No.	EAN		Size (L/H/W)	Weight
Digital Single Barrel Foot Pump	12208	5060428030060		29.8 x 11.8 x 9 cm	1.77 kg
Packaging	MOQ	PCS/CTN	Weight	Size (L/H/W)	Carton CBM
Box	1.000	10	18.21 kg	49.5 x 25.5 x 33 cm	0.042

Changes in the interest of technical progress may mean the product varies from that shown here.

MICHELIN DIGITAL DOUBLE BARREL FOOT PUMP

- Digital gauge accurate to +/- 1 PSI (up to 50 PSI).
- Ergonomic rubber tread plate.
- Switchable between PSA, BAR & kPa.
- Wide footprint steel frame with rubber feet.
- Snap-in adaptor storage.



UNIQUE
DIGITAL GAUGE



PSI / BAR / KPA



HOSE
LENGTH



Description	Model No.	EAN		Size (L/H/W)	Weight
Digital Double Barrel Foot Pump	12209	5060428030077		29.8 x 17.8 x 9 cm	2.41 kg
Packaging	MOQ	PCS/CTN	Weight	Size (L/H/W)	Carton CBM
Box	1.000	6	14.9 kg	37 x 31.5 x 32.5 cm	0.038

Changes in the interest of technical progress may mean the product varies from that shown here.

MICHELIN 12 V FAST FLOW DIGITAL TYRE INFLATOR

- Detachable digital gauge accurate to +/- 1 PSI (up to 50 PSI).
- 0-30 PSI in approx 4 minutes.*
- Switchable between PSI, BAR & kPa.
- White LCD display.
- Deflation valve.
- Adaptor kit included.



QUICK
INFLATION*



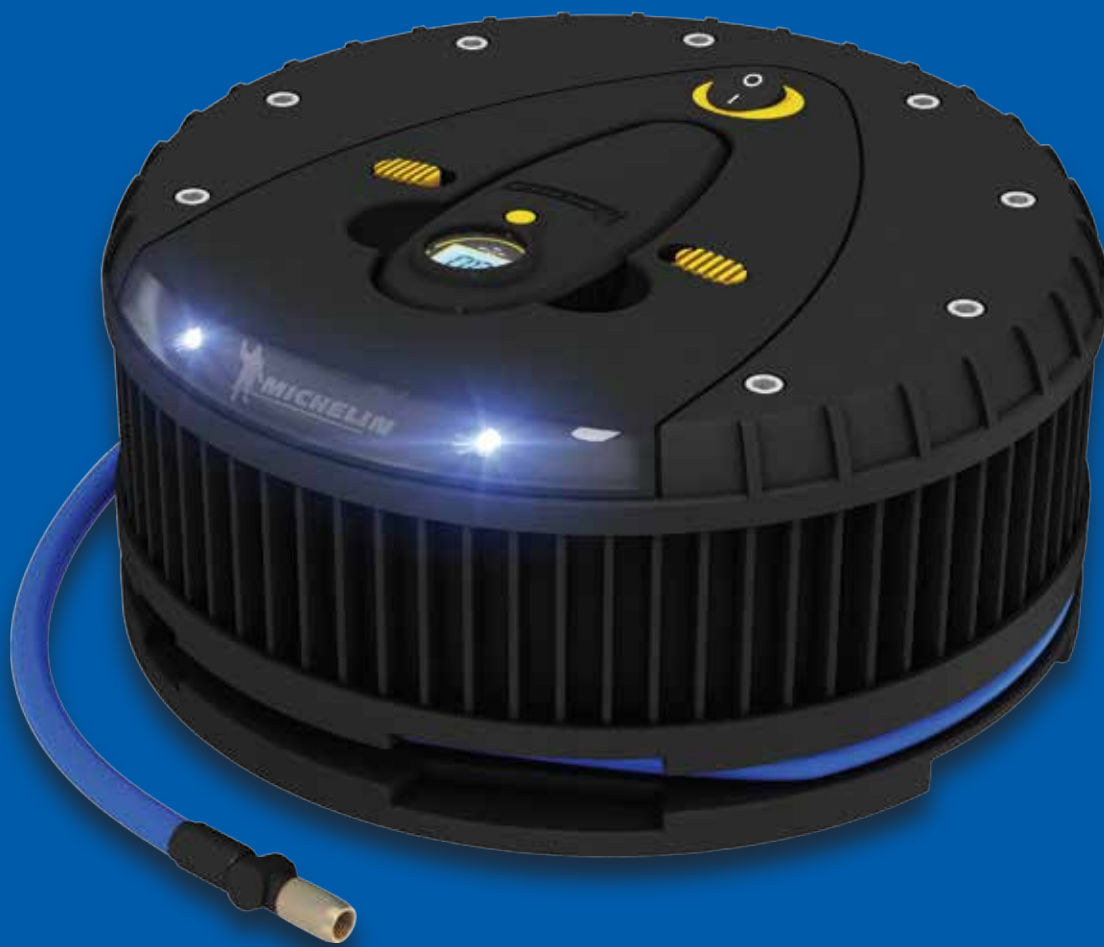
PSI / BAR / KPA



HOSE
LENGTH



NIGHT TIME
ILLUMINATION



Description	Model No.	EAN		Size (L/H/W)	Weight
12 V Fast Flow Digital Tyre Inflator	12260	5060428031074		20.5 x 10.2 x 20.8 cm	1.35 kg
Packaging	MOQ	PCS/CTN	Weight	Size (L/H/W)	Carton CBM
Box	1,000	8	11.7 kg	44.5 x 23.3 x 44.2 cm	0.046

Changes in the interest of technical progress may mean the product varies from that shown here.
* Based on 175/70 R13 tyre.

MICHELIN PROGRAMMABLE FAST FLOW TYRE INFLATOR

- Pre-set function.
- Digital gauge accurate to +/- 1 PSI (up to 50 PSI).
- 0-30 PSI in approx 3 minutes.*
- Switchable between PSI, BAR & kPa.
- Superbright LED lights.
- Deflation valve.
- Adaptor kit included.



QUICK
INFLATION*



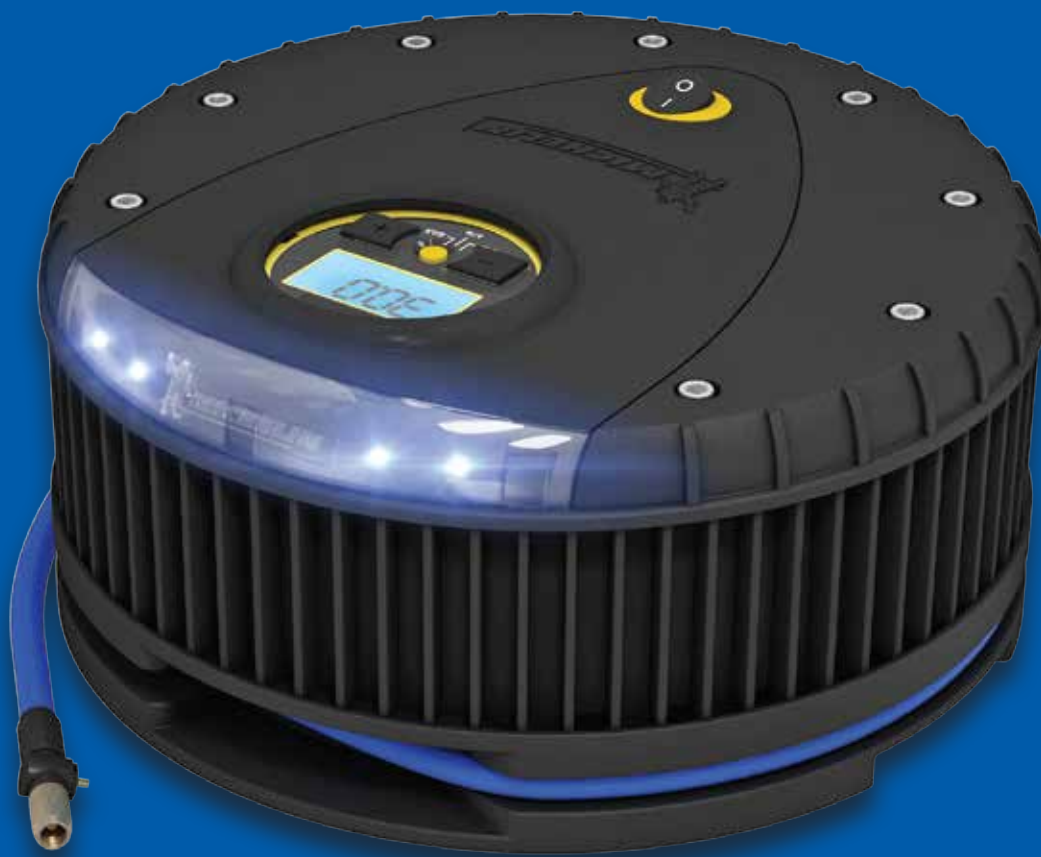
PSI / BAR / KPA



HOSE
LENGTH



NIGHT TIME
ILLUMINATION



Product Name	Model No.	EAN		Size (L/H/W)	Weight
Programmable Fast Flow Tyre Inflator	12262	5060428031081		22.6 x 22.9 x 11.3 cm	1.59 kg
Packaging	MOQ	PCS/CTN	Weight	Size (L/H/W)	Carton CBM
Box	1.000	6	10.7 kg	48.3 x 25.2 x 36.9 cm	0.045

Changes in the interest of technical progress may mean the product varies from that shown here.
* Based on 175/70 R13 tyre.

MICHELIN COMPACT 'TOP UP' DIGITAL TYRE INFLATOR

- Digital gauge accurate to +/- 1 PSI (up to 50 PSI).
- Designed for topping up tyre pressure.
- Switchable between PSI, BAR & kPa.
- Compact design stores in glove box.
- 14 cm long high pressure air hose.
- White LCD display.



UNIQUE
DIGITAL GAUGE



DIGITAL
POWER SOURCE



Description	Model No.	EAN		Size (L/H/W)	Weight
Compact "Top Up" Digital Tyre Inflator	12264	5060428030084		14.2 x 14.2 x 6.3 cm	0.5 kg
Packaging	MOQ	PCS/CTN	Weight	Size (L/H/W)	Carton CBM
Box	1.008	12	6.5 kg	44.6 x 30.4 x 14.6 cm	0.02

Changes in the interest of technical progress may mean the product varies from that shown here.

MICHELIN FAST FLOW DIGITAL TYRE INFLATOR

- Digital gauge accurate to +/- 1 PSI (up to 50 PSI).
- 0-30 PSI in approx 4 minutes.*
- Switchable between PSI, BAR & kPa.
- Superbright LED lights.
- 1 x 12 V power socket.
- 60 cm long high pressure air hose.
- White LCD display.



Description	Model No.	EAN		Size (L/H/W)	Weight
Fast Flow Digital Tyre Inflator	12265	5010555122657		20.2 x 18 x 8.8 cm	1.18 kg
Packaging	MOQ	PCS/CTN	Weight	Size (L/H/W)	Carton CBM
Box	1.000	8	12 kg	38 x 38 x 22 cm	0.032

Changes in the interest of technical progress may mean the product varies from that shown here.
* Based on 175/70 R13 tyre.

MICHELIN PROGRAMMABLE FAST FLOW DIGITAL TYRE INFLATOR

- Digital gauge accurate to +/- 1 PSI (up to 50 PSI).
- 0-30 PSI in approx 3 minutes.*
- Switchable between PSI, BAR & kPa.
- Superbright LED lights.
- 1 x 12 V power socket.
- 60 cm long high pressure air hose.
- White LCD display.



Description	Model No.	EAN		Size (L/H/W)	Weight
Programmable Fast Flow Digital Tyre Inflator	12266	5060428030107		20.2 18 x 8.8 cm	1.21 kg
Packaging	MOQ	PCS/CTN	Weight	Size (L/H/W)	Carton CBM
Box	1,000	8	10.88 kg	38 x 38 x 22 cm	0.032

Changes in the interest of technical progress may mean the product varies from that shown here.
* Based on 175/70 R13 tyre.

**NEW
PRODUCT**

MICHELIN 4X4 / SUV DIGITAL TYRE INFLATOR

- Digital gauge accurate to +/- 1 PSI (up to 50 PSI).
- 0-35 PSI in approx 2:45 minutes.*
- Switchable between PSI, BAR & kPa.
- Superbright LED lights.
- Bleed valve.
- White LCD display.
- 65 cm long high pressure air hose.
- Tyre valve storage.



Description	Model No.	EAN		Size (L/H/W)	Weight
4x4 / SUV Digital Tyre Inflator	12310	5060428033139		24.7 x 13.5 x 10.2 cm	1.6 kg
Packaging	MOQ	PCS/CTN	Weight	Size (L/H/W)	Carton CBM
Box	304	8	18.8 kg	58.8 x 36.8 x 43.8 cm	0.095

Changes in the interest of technical progress may mean the product varies from that shown here.
* Based on 175/70 R13 tyre.

**NEW
PRODUCT**

MICHELIN PROGRAMMABLE RAPID 4X4 / SUV DIGITAL TYRE INFLATOR

- Pre-set function.
- Digital gauge accurate to +/- 1 PSI (up to 50 PSI), +/- 2 PSI (to 80 PSI).
- 0-35 PSI in approx 2 minutes.*
- Switchable between PSI, BAR & kPa.
- Superbright LED lights.
- Bleed valve.
- White LCD display.
- 65 cm long high pressure air hose.
- Tyre valve storage.



**QUICK
INFLATION***



**POWER
INPUT**



**4x4 / SUV
SUITABLE**



**PRESSURE
PRE-SET**



Description	Model No.	EAN		Size (L/H/W)	Weight
Programmable Rapid 4x4 / SUV Digital Tyre Inflator	12312	5060428033146		27.6 x 16.8 x 11.4 cm	2.3 kg
Packaging	MOQ	PCS/CTN	Weight	Size (L/H/W)	Carton CBM
Box	304	6	18.9 kg	48.4 x 39.1 x 46.6 cm	0.088

Changes in the interest of technical progress may mean the product varies from that shown here.
* Based on 175/70 R13 tyre.

**NEW
PRODUCT**

MICHELIN PROGRAMMABLE SUPERFAST 4X4 / SUV DIGITAL TYRE INFLATOR

- Pre-set function.
- Digital gauge accurate to +/- 1 PSI (up to 50 PSI), +/- 2 PSI (to 80 PSI).
- 0-35 PSI in approx 85 seconds.*
- Switchable between PSI, BAR & kPa.
- Superbright LED lights.
- Bleed valve.
- White LCD display.
- 85 cm long high pressure air hose.
- Tyre valve storage.

**85
SECS**

**QUICK
INFLATION***

12v

**POWER
INPUT**

**4X4 / SUV
SUITABLE**

**+ -
PRESSURE
PRESET**



Description	Model No.	EAN		Size (L/H/W)	Weight
Programmable Superfast 4x4 / SUV Digital Tyre Inflator	12314	5060428033153		30.4 x 17.9 x 12.2 cm	3 kg
Packaging	MOQ	PCS/CTN	Weight	Size (L/H/W)	Carton CBM
Box	300	4	16.1 kg	41.9 x 34.7 x 48.8 cm	0.071

Changes in the interest of technical progress may mean the product varies from that shown here.
* Based on 175/70 R13 tyre.

**NEW
PRODUCT**

MICHELIN PROGRAMMABLE SUPERFAST 4X4 / SUV DIGITAL TYRE INFLATOR

- Alligator clamps for direct battery connection.
- Pre-set function.
- Digital gauge accurate to +/- 1 PSI (up to 50 PSI), +/- 2 PSI (to 80 PSI).
- 0-35 PSI in approx 1:25 minutes.*
- Switchable between PSI, BAR & kPa.
- Superbright LED lights.
- Bleed valve.
- White LCD display.
- 85 cm long high pressure air hose.
- Tyre valve storage.



Description	Model No.	EAN		Size (H/W)	Weight
Programmable Superfast 4x4 / SUV Digital Tyre Inflator	12315	5060428032569		30.4 x 17.9 x 12.2 cm	3 kg
Packaging	MOQ	PCS/CTN	Weight	Size (L/H/W)	Carton CBM
Clamshell	300	4	16.5 kg	41.9 x 34.7 x 48.8 cm	0.071

Changes in the interest of technical progress may mean the product varies from that shown here.
* Based on 175/70 R13 tyre.

**NEW
PRODUCT**

MICHELIN SUPERFAST 4X4 / SUV DIGITAL TYRE INFLATOR

- Pre-set function.
- Digital gauge accurate to +/- 1 PSI (up to 50 PSI), +/- 2 PSI (to 80 PSI).
- 0-35 PSI in approx 80 seconds.*
- Switchable between PSI, BAR & kPa.
- Superbright LED lights.
- Bleed valve.
- White LCD display.
- 85 cm long high pressure air hose.
- Tyre valve storage.



**QUICK
INFLATION***



**POWER
INPUT**



**4x4 / SUV
SUITABLE**



**PRESSURE
PRE-SET**



Description	Model No.	EAN		Size (L/H/W)	Weight
Superfast 4x4 / SUV Digital Tyre Inflator	12316	5060428033160		30.4 x 17.9 x 12.2 cm	3 kg
Packaging	MOQ	PCS/CTN	Weight	Size (L/H/W)	Carton CBM
Box	300	4	16.3 kg	41.9 x 34.7 x 48.8 cm	0.071

Changes in the interest of technical progress may mean the product varies from that shown here.
* Based on 175/70 R13 tyre.

MICHELIN TOP UP MINI RECHARGABLE INFLATOR

**NEW
PRODUCT**

- Cordless
- Lightweight
- Portable
- Programmable pre-set pressure
- Fast rechargeable
- LED Light



IDEAL FOR TYRE
PRESSURE TOP UP



LONG LASTING
CHARGE



PSI / BAR



NIGHT TIME
ILLUMINATION



Description	Model No.	EAN		Size (L/H/W)	Weight
"Top-up" Mini Rechargeable Inflator	33382	5060428033382		19.8 x 5.1 x 4.5 cm	0.4 kg
Packaging	MOQ	PCS / CTN	Weight	Size (L/H/W)	Carton CBM
Box	1000	12	7.68 kg	29 x 28.5 x 27.7 cm	0.023

Changes in the interest of technical progress may mean the product varies from that shown here.

FLOOR MATS

In an aim to identify and meet all demands and needs of today's motorists, Michelin has developed a range of in-car accessories to make journeys more pleasurable. A key part of this is our bespoke designed MICHELIN floor mats which feature numerous features and benefits to keep cars clean and secure.



MICHELIN HEAVY DUTY WITH FLEXLINES 4 PCS SET

- FLEXLINES™ - Allow mats to mold to contours of vehicle floor for a smooth, snug fit.
- DIRT TRAPS™ - Collect and hold water, dirt and debris for greater carpet protection.
- TREAD & CLEAT™ BACKING SYSTEM - Unique anti-slip cleat design.
- Universal fit mats are designed to fit most vehicles: cars, trucks, SUV's & vans.
- Premium compound is naturally soil and stain resistant.
- Easy to clean: Simply rinse with soap and water.
- 4-Piece set - 2 Front and 2 Rear.

MODEL No. 903-BLK

BLACK

MODEL No. 903-GRY

GREY

MODEL No. 903-TAN

TAN



Description	Model No.	EAN		Size (L/W/H)	Weight
Heavy Duty With Flex Lines 4 PCS Set	903-BLK	5060428030145		Front: 71 x 47 x 1.93 Rear: 33 x 48 x 1.93	5.1 kg
Packaging	MOQ	PCS/CTN	Weight	Size (L/W/H)	Carton CBM
Box	600	3	16.5 kg	77 x 49 x 11 cm	0.042

Changes in the interest of technical progress may mean the product varies from that shown here.
References and model availability upon request.

MICHELIN ALL-SEASON PERFORMANCE 4 PCS SET

- Universal Fit mats are designed to fit most vehicles: cars, trucks, SUV's & vans.
- Premium compound is naturally soil and stain resistant.
- Easy to clean: Simply rinse with soap and water.
- Raised ribbed surface collects and holds water, dirt and debris.
- Unique anti-slip nib design provides aggressive grip.
- 4-Piece set - 2 Front and 2 Rear.

MODEL No. 911-BLK



MODEL No. 911-GRY



MODEL No. 911-TAN



Description	Model No.	EAN		Size (L/W/H)	Weight
All-Season Performance 4 PCS Set	911-BLK	5060428030244		Front: 72 x 47 x 1.93 Rear: 34.5 x 40.5 x 1.93	4.1 kg
Packaging	MOQ	PCS/CTN	Weight	Size (L/W/H)	Carton CBM
Box	600	6	21.3 kg	77.5 x 49 x 17 cm	0.064

Changes in the interest of technical progress may mean the product varies from that shown here.
References and model availability upon request.

MICHELIN ALL-WEATHER PREMIUM 2 PCS SET

- Universal Fit mats are designed to fit most vehicles: cars, trucks, SUV's & vans.
- Premium compound is naturally soil and stain resistant.
- Easy to clean: Simply rinse with soap and water.
- Raised ribbed surface collects and holds water, dirt and debris.
- Unique anti-slip nib design provides aggressive grip.
- 2-Piece set.

MODEL No. 917-BLK

BLACK

MODEL No. 917-GRY

GREY

MODEL No. 917-TAN

TAN



Description	Model No.	EAN		Size (L/W/H)	Weight
All-Weather Premium 2 PCS Set	917-BLK	5060428031258		72 x 48 x 1.93	3.06 kg
Packaging	MOQ	PCS/CTN	Weight	Size (L/W/H)	Carton CBM
Box	600	6	24.5 kg	77 x 49 x 11 cm	0.069

Changes in the interest of technical progress may mean the product varies from that shown here.
References and model availability upon request.

MICHELIN PREMIUM CARPET 4 PCS SET

- Universal Fit mats are designed to fit most vehicles: cars trucks, SUV's & vans.
- Durable polypropylene carpet is soft to the touch and resists stains and soil.
- Easy to clean: Simply rinse with soap and water.
- Woven carpet heel pad provides extra durability in high wear area.
- Nib Backing System. Unique anti-slip nib design provides aggressive grip.
- 4-Piece set - 2 Front and 2 Rear.

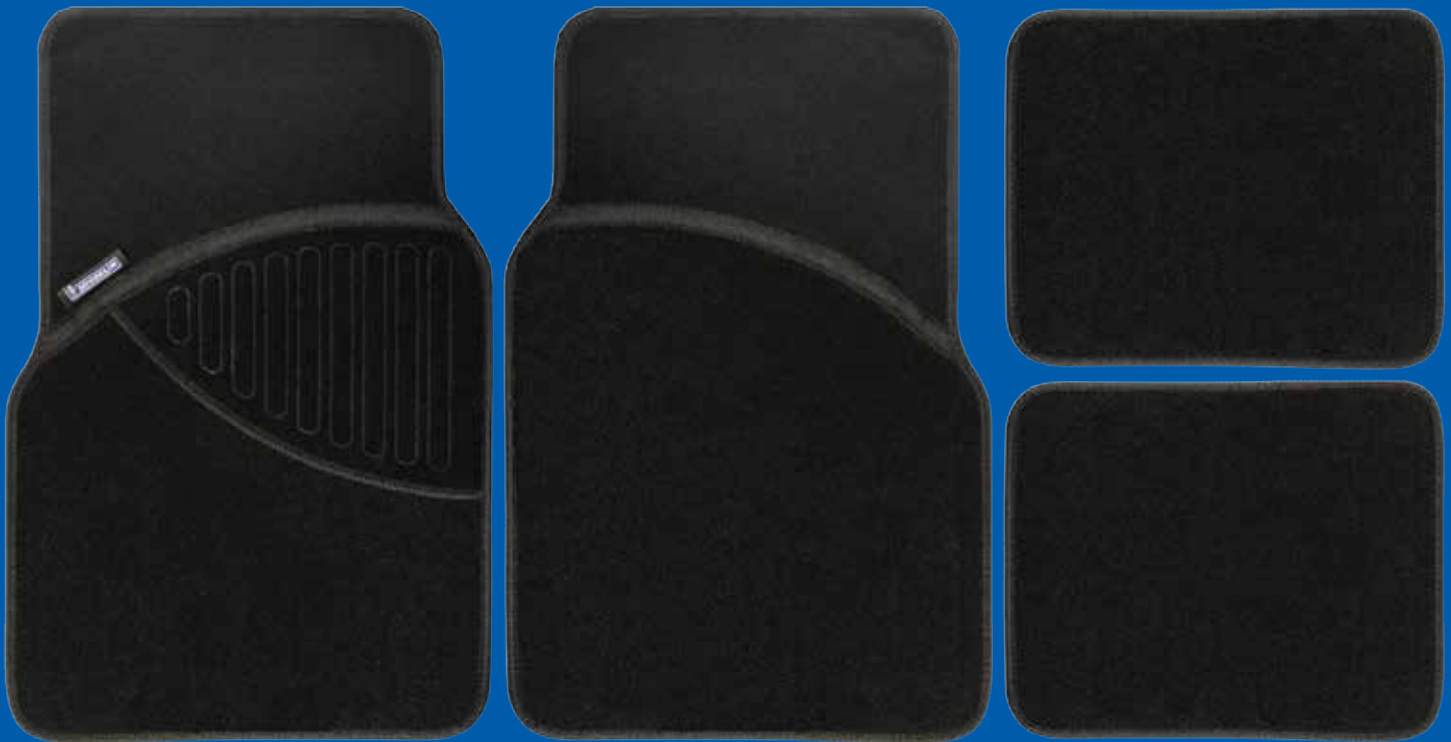
MODEL No. 924-BLK



MODEL No. 924-GRY



MODEL No. 924-TAN



Description	Model No.	EAN		Size (L/W/H)	Weight
Premium Carpet 4 PCS Set	924-BLK	5060428030169		Front: 64 x 43 x 0.51 Rear: 26 x 42 x 0.51	1.5 kg
Packaging	MOQ	PCS/CTN	Weight	Size (L/W/H)	Carton CBM
Box	1.200	4	7.2 kg	78 x 44 x 10 cm	0.042

Changes in the interest of technical progress may mean the product varies from that shown here.
References and model availability upon request.

MICHELIN PREMIUM CARPET WITH PVC HEEL PAD 4 PCS SET

- Universal Fit mats are designed to fit most vehicles: cars trucks, SUV's & vans.
- Premium compound is naturally soil and stain resistant.
- Durable polypropylene carpet is soft to the touch and resists stains and soil.
- Easy to clean: Simply rinse with soap and water.
- Premium compound heel pad provides extra durability in high wear area.
- Nib Backing System. Unique anti-slip nib design provides aggressive grip.
- 4-Piece set - 2 Front and 2 Rear.

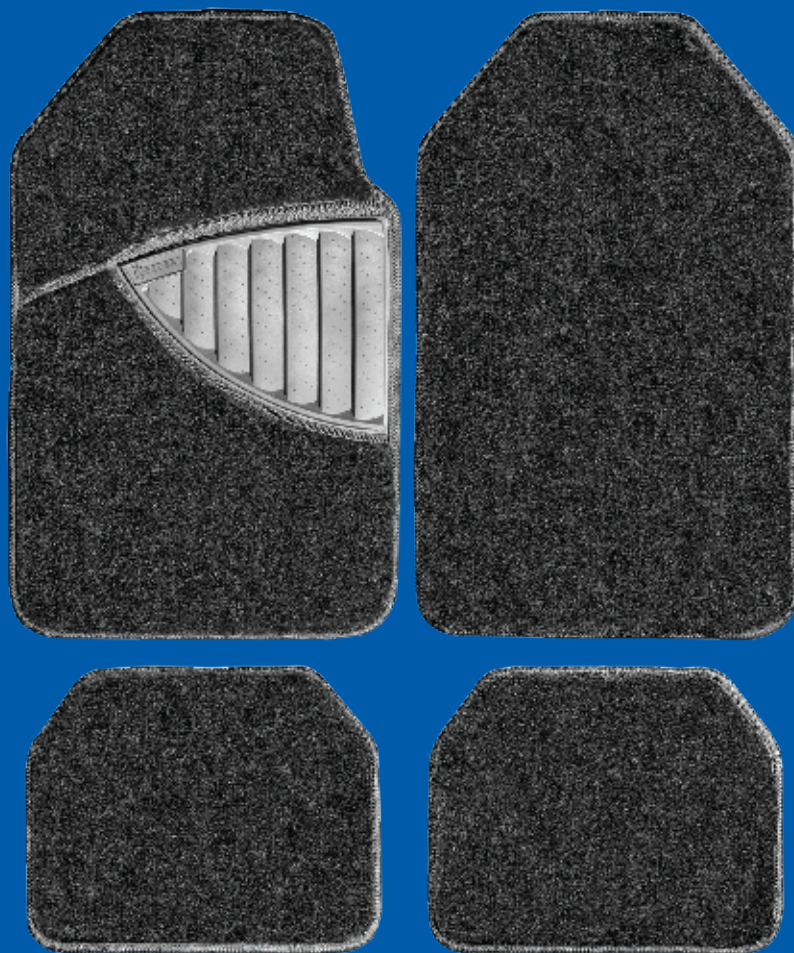
MODEL No. 928-BLK



MODEL No. 928-GRY



MODEL No. 928-TAN



Description	Model No.	EAN		Size (L/W/H)	Weight
Premium Carpet With PVC Heel Pad 4 PCS Set	928-BLK	5060428030176		Front: 66 x 43 x 1.4 Rear: 27 x 43 x 1.4	2.35 kg
Packaging	MOQ	PCS/CTN	Weight	Size (L/W/H)	Carton CBM
Box	1.200	4	10.5 kg	78 x 44 x 14 cm	0.05

Changes in the interest of technical progress may mean the product varies from that shown here.
References and model availability upon request.

MICHELIN ALL-WEATHER WITH FLEX LINES 4 PCS SET

- FLEXLINES™ - Allow mats to mold to contours of vehicle floor for a smooth, snug fit.
- DIRT TRAPS™ - Collect and hold water, dirt and debris for greater carpet protection.
- TREAD & CLEAT™ BACKING SYSTEM - Unique anti-slip cleat design.
- Universal Fit mats are designed to fit most vehicles: cars, trucks, SUV's & vans.
- Premium compound is naturally soil and stain resistant.
- Easy to clean: Simply rinse with soap and water.
- 4-Piece set - 2 Front and 2 Rear.

MODEL No. 965-BLK



MODEL No. 965-GRY



MODEL No. 965-TAN



Description	Model No.	EAN		Size (L/W/H)	Weight
All-Weather With Flex Lines 4 PCS Set	965-BLK	5060428030183		Front: 71 x 45 x 1.1 Rear: 40 x 33 x 1.1	3.7 kg
Packaging	MOQ	PCS/CTN	Weight	Size (L/W/H)	Carton CBM
Box	600	4	15.49 kg	73.6 x 48.3 x 10.8 cm	0.042

Changes in the interest of technical progress may mean the product varies from that shown here.
References and model availability upon request.

MICHELIN

ALL-WEATHER WITH FLEX LINES

4 PCS SET

- FLEXLINES™ - Allow mats to mold to contours of vehicle floor for a smooth, snug fit.
- DIRT TRAPS™ - Collect and hold water, dirt and debris for greater carpet protection.
- TREAD & CLEAT™ BACKING SYSTEM - Unique anti-slip cleat design.
- Universal Fit mats are designed to fit most vehicles: cars, trucks, SUV's & vans.
- Premium compound is naturally soil and stain resistant.
- Easy to clean: Simply rinse with soap and water.
- 4-Piece set - 2 Front and 2 Rear.

MODEL No. 980-BLK



MODEL No. 980-GRY



MODEL No. 980-TAN



Description	Model No.	EAN		Size (L/W/H)	Weight
All-Weather With Flex Lines 4 PCS Set	980-BLK	5060428030190		Front: 71 x 45 x 1.1 Rear: 40 x 33 x 1.1	4.3 kg
Packaging	MOQ	PCS/CTN	Weight	Size (L/W/H)	Carton CBM
Box	600	4	19.1 kg	76 x 50 x 13 cm	0.05

Changes in the interest of technical progress may mean the product varies from that shown here.
References and model availability upon request.

MICHELIN ALL-WEATHER PREMIUM WITH FLEX LINES 4 PCS SET

- FLEXLINES™ - Allow mats to mold to contours of vehicle floor for a smooth, snug fit.
- DIRT TRAPS™ - Collect and hold water, dirt and debris for greater carpet protection.
- TREAD & CLEAT™ BACKING SYSTEM - Unique anti-slip cleat design.
- Universal Fit mats are designed to fit most vehicles: cars, trucks, SUV's & vans.
- Premium compound is naturally soil and stain resistant.
- Easy to clean: Simply rinse with soap and water.
- 4-Piece set - 2 Front and 2 Rear.

MODEL No. 990-BLK



MODEL No. 990-GRY



MODEL No. 990-TAN



Description	Model No.	EAN		Size (L/W/H)	Weight
All-Weather Premium With Flex Lines 4 PCS Set	990-BLK	5060428030206		Front: 71 x 50 x 1.9 Rear: 38 x 45 x 1.9	4.25 kg
Packaging	MOQ	PCS/CTN	Weight	Size (L/W/H)	Carton CBM
Box	600	3	19 kg	77 x 53 x 11 cm	0.046

Changes in the interest of technical progress may mean the product varies from that shown here. References and model availability upon request.

MICHELIN

ALL-WEATHER PREMIUM PROTECTION WITH FLEX LINES 4 PCS SET

- FLEXLINES™ - Allow mats to mold to contours of vehicle floor for a smooth, snug fit.
- DIRT TRAPS™ - Collect and hold water, dirt and debris for greater carpet protection.
- TREAD & CLEAT™ BACKING SYSTEM - Unique anti-slip cleat design.
- Universal Fit mats are designed to fit most vehicles: cars, trucks, SUV's & vans.
- Premium compound is naturally soil and stain resistant.
- Easy to clean: Simply rinse with soap and water.
- 4-Piece set - 2 Front and 2 Rear.

MODEL No. 991-BLK



MODEL No. 991-GRY



MODEL No. 991-TAN



Description	Model No.	EAN		Size (L/W/H)	Weight
All-Weather Premium Protection With Flex Lines 4 PCS Set	991-BLK	5060428031289		Front: 71.1 x 51.4 x 1.9 Rear: 36 x 46 x 1.9	4 kg
Packaging	MOQ	PCS/CTN	Weight	Size (L/W/H)	Carton CBM
Box	600	4	17 kg	80 x 53 x 14 cm	0.06

Changes in the interest of technical progress may mean the product varies from that shown here. References and model availability upon request.

MICHELIN

LOW PROFILE PREMIUM PROTECTION WITH FLEXI-FIT 4X PCS SET

- FLEXI-FIT - Contours to every interior.
- DIRT TRAPS™ - Collect and hold water, dirt and debris for greater carpet protection.
- Shark Fin Anti-Slip Backing - Holds mat firmly in place.
- Universal Fit mats are designed to fit most vehicles: cars, trucks, SUV's & vans.
- Durable Heel Pad - Extends mat life.
- Easy to clean: Simply rinse with soap and water.
- 4-Piece set - 2 Front and 2 Rear.



Description	Model No.	EAN		Size (L/H/W)	Weight
Low Profile Premium Protection With Flexilines	949B	8697475713669		Front: 70 x 44.5 x 1 Rear: 40 x 32 x 1	3.5 kg
Packaging	MOQ	PCS / CTN	Weight	Size (L/H/W)	Carton CBM
Box	720	6	22 kg	72 x 46 x 18 cm	0.06

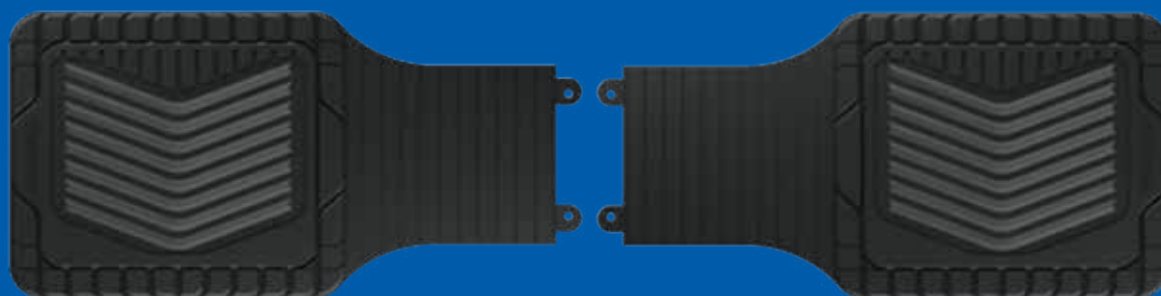
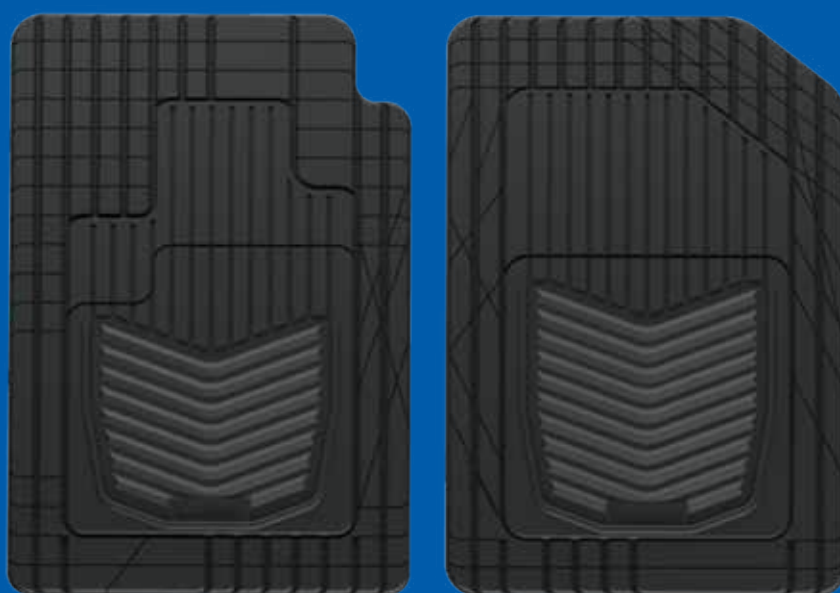
Changes in the interest of technical progress may mean the product varies from that shown here. References and model availability upon request.

MICHELIN

TRIMABLE UNIVERSAL FIT

4 PCS SET

- Trimable 4-Piece set - 2 Front and 2 Rear.
- Universal Fit mats are designed to fit most vehicles: cars, trucks, SUV's & vans.
- SmartCleat™ Grip System - Adds an extra level of grip while driving.
- Deep Channels - Trap dirt & debris.
- Durable Heel Pad - Extends mat life.
- Adjustable runner mat.
- Easy to clean - Simply rinse with soap and water.



Description	Model No.	EAN		Size (L/H/W)	Weight
Car Mats Trimable Universal Fit 4 PCS Set	238-BLK	5060428033238		Front: 71 x 47.5 x 2 Rear: 66.04 x 36.2 x 1.02	3.7 kg
Packaging	MOQ	PCS / CTN	Weight	Size (L/H/W)	Carton CBM
Box	600	4	20.12 kg	79 x 49 x 15 cm	0.06

Changes in the interest of technical progress may mean the product varies from that shown here.
References and model availability upon request.

AIR CARE

Keep your vehicle smelling clean and fresh with our in-house developed MICHELIN range of classic fragrance air fresheners.



**NEW
PRODUCT**

MICHELIN AIR FRESHENER 2D CLASSIC

- Refreshing fragrances.
- 2D hanging card air freshener.
- Ideal for use in the home, car & office.
- Lasting up to 4 weeks.
- Available in 4 different shapes and fragrances.

MODEL No. 32576

**MOUNTAIN
FRESH
SCENT**

MODEL No. 32606

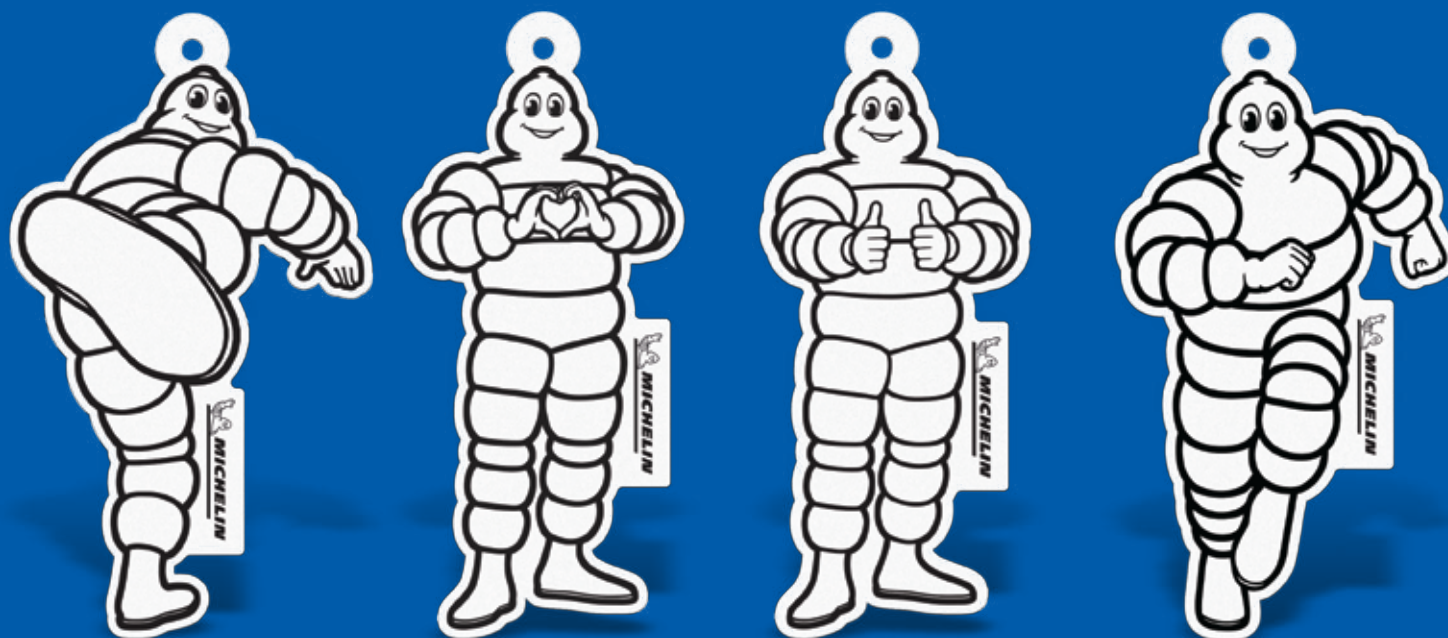
**SUMMER
DREAM
SCENT**

MODEL No. 32590

**SPORT
SCENT**

MODEL No. 32683

**VANILLA
SCENT**



Description	Model No.	EAN		Size (L/W/H)	Weight
Air Freshener 2D Classic	32576	5060428032576		0.1 x 7.6 x 18.5 cm	0.01 kg
Packaging	MOQ	PCS/CTN	Weight	Size (L/W/H)	Carton CBM
CDU	10.080	30	0.5 kg	14 x 9.3 x 19.3 cm	0.003

Changes in the interest of technical progress may mean the product varies from that shown here.
References and scent availability upon request.

MICHELIN AIR FRESHENER 2D PREMIUM

- Refreshing fragrances.
- 2D hanging card air freshener.
- Ideal for use in the home, car & office.
- Lasting up to 8 weeks.
- Available in 6 different fragrances.



MODEL No. 31920

ELEGANCE
SCENT

MODEL No. 31890

PASSION
SCENT

MODEL No. 31944

CANDY
SCENT

MODEL No. 31937

ENERGY
SCENT

MODEL No. 31913

FRESH
SCENT

MODEL No. 31906

WAVE
SCENT



Description	Model No.	EAN		Size (L/W/H)	Weight
Air Freshener 2D Premium	31920	5060428031920		0.2 x 8.5 x 18.5 cm	0.02 kg
Packaging	MOQ	PCS/CTN	Weight	Size (L/W/H)	Carton CBM
CDU	10.080	480	11.78 kg	61.2 x 21.2 x 63.2 cm	0.082

Changes in the interest of technical progress may mean the product varies from that shown here.
References and scent availability upon request.

MICHELIN AIR FRESHENER TYRE CAN

- Fragrance control.
- Ideal for use in the home, car & office.
- 2 colours available.
- Available in 6 different fragrances.



MODEL No. 31326

VANILLA
SCENT

MODEL No. 31340

PINE
SCENT

MODEL No. 31357

JET BLACK
SCENT

MODEL No. 31333

BUBBLE GUM
SCENT

MODEL No. 31630

OCEAN FRESH
SCENT

MODEL No. 31623

ORANGE
SCENT



Description	Model No.	EAN		Size (L/W/H)	Weight
Air Freshener Tyre Can 48g (30ml)	31357	5060428031357		3.5 x 8.5 x 18.5 cm	0.09 kg
Packaging	MOQ	PCS/CTN	Weight	Size (L/W/H)	Carton CBM
CDU	1.530	90	10.44 kg	62.2 x 17.2 x 63.2 cm	0.068

Changes in the interest of technical progress may mean the product varies from that shown here. References and scent availability upon request.

MICHELIN AIR FRESHENER 3D VENT BIB

- In the shape of the iconic Michelin Man (Bibendum).
- Designed exclusively for attaching to the vehicle air vent blades.
- Available in 6 different fragrances.
- Universal Vent Clip included.



MODEL No. 32064



MODEL No. 32040



MODEL No. 32057



MODEL No. 32019



MODEL No. 32026



MODEL No. 32033



Description	Model No.	EAN		Size (L/W/H)	Weight
Air Freshener 3D Vent Bib	32064	5060428032064		3.1 x 8.7 x 19.6 cm	0.04 kg
Packaging	MOQ	PCS/CTN	Weight	Size (L/W/H)	Carton CBM
CDU	1.512	72	5.03 kg	62.2 x 17.2 x 63.2 cm	0.068

Changes in the interest of technical progress may mean the product varies from that shown here.
References and scent availability upon request.

MICHELIN AIR FRESHENER BIB MINI BOTTLE 5 ML

- Long lasting premium fragrance.
- Available in 7 different fragrances.
- Adjustable ribbon included.



LONG LASTING
FRAGRANCE



MODEL No. 31821



MODEL No. 31791



MODEL No. 31807



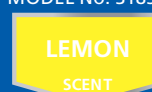
MODEL No. 31814



MODEL No. 32811



MODEL No. 31838



MODEL No. 31852



Description	Model No.	EAN		Size (L/W/H)	Weight
Air Freshener Bib Mini Bottle 5ml	31791	5060428031791		3.8 x 8.2 x 18.5 cm	0.06 kg
Packaging	MOQ	PCS/CTN	Weight	Size (L/W/H)	Carton CBM
CDU	2.520	72	6.65 kg	62.2 x 17.2 x 63.2 cm	0.068

Changes in the interest of technical progress may mean the product varies from that shown here.
References and scent availability upon request.

AUTOMOTIVE CLEANING

This range helps motorists maintain the appearance and safety of their vehicles.
With a variety of high-quality products to keep vehicle interior and exterior clean and maintained.



MICHELIN DASH & TRIM CLEANER

- Suitable on all trim styles including plastic, carbon fibre, chrome, wood and rubber.
- Triple Action Formula.
- Leaves original finish.
- Anti-static.
- Restores natural colour.
- Non-greasy.
- Pre-compression trigger.
- REACH standard.
- HDPE bottle 650ml.
- Made in EU.



PRE-COMPRESSION
TRIGGER



FINE MIST
SPRAY



Description	Model No.	EAN		Size (L/W/H)	Weight
Dash & Trim Cleaner	31463	5060428031463		5.5 x 11 x 26.5 cm	0.72 kg
Packaging	MOQ	PCS/CTN	Weight	Size (L/W/H)	Carton CBM
Box	1.500	12	9.05 kg	23.5 x 34.5 x 28.6 cm	0.023

Changes in the interest of technical progress may mean the product varies from that shown here.

MICHELIN TYRE DRESSING

- Coats up to 40 tyres.
- Original finish.
- Anti-static.
- Pre-compression trigger.
- REACH standard.
- HDPE bottle 650ml.
- Made in EU.



PRE-COMPRESSION
TRIGGER



FINE MIST
SPRAY



Description	Model No.	EAN		Size (L/W/H)	Weight
Tyre Dressing	31371	5060428031371		5.5 x 11 x 26.5 cm	0.73 kg
Packaging	MOQ	PCS/CTN	Weight	Size (L/W/H)	Carton CBM
Box	1.500	12	9.2 kg	23.5 x 34.5 x 28.6 cm	0.023

Changes in the interest of technical progress may mean the product varies from that shown here.

MICHELIN GLOSSY DASH & TRIM CLEANER

- *Renews and preserves.*
- *Leaves original finish.*
- *Anti-static.*
- *Pre-compression trigger.*
- *REACH standard.*
- *HDPE bottle 650ml.*
- *Made in EU.*



PRE-COMPRESSION
TRIGGER



FINE MIST
SPRAY



Description	Model No.	EAN		Size (L/W/H)	Weight
Glossy Dash & Trim Cleaner	31388	5060428031388		5.5 x 11 x 26.5 cm	0.72 kg
Packaging	MOQ	PCS/CTN	Weight	Size (L/W/H)	Carton CBM
Box	1.500	12	9.05 kg	23.5 x 34.5 x 28.6 cm	0.023

Changes in the interest of technical progress may mean the product varies from that shown here.

MICHELIN FOAMING GLASS CLEANER

- Perfect for vertical surfaces.
- Removes dirt and insects.
- Streak-free formula.
- Protective polymers prevent future dirt build-up.
- Pleasant fragrance.
- Pre-compression trigger.
- REACH standard.
- HDPE bottle 650ml.
- Made in EU.



PRE-COMPRESSION
TRIGGER



FINE MIST
SPRAY



Description	Model No.	EAN		Size (L/W/H)	Weight
Foaming Glass Cleaner	31395	5060428031395		5.5 x 11 x 26.5 cm	0.72 kg
Packaging	MOQ	PCS/CTN	Weight	Size (L/W/H)	Carton CBM
Box	1.500	12	9.07 kg	23.5 x 34.5 x 28.6 cm	0.023

Changes in the interest of technical progress may mean the product varies from that shown here.

MICHELIN INSECT REMOVER

- Removes insects.
- Ideal for glass, plastics, chrome and helmet visors.
- Streak-free formula.
- Pre-compression trigger.
- REACH standard.
- HDPE bottle 650ml.
- Made in EU.



PRE-COMPRESSION
TRIGGER



FINE MIST
SPRAY



Description	Model No.	EAN		Size (L/W/H)	Weight
Insect Remover	31401	5060428031401		5.5 x 11 x 26.5 cm	0.74 kg
Packaging	MOQ	PCS/CTN	Weight	Size (L/W/H)	Carton CBM
Box	1.500	12	9.21 kg	23.5 x 34.5 x 28.6 cm	0.023

Changes in the interest of technical progress may mean the product varies from that shown here.

MICHELIN WHEEL CLEANER

- Acid-free.
- Safe on all types of wheels.
- PH-balanced formula.
- Removes brake dust.
- Pre-compression trigger.
- REACH standard.
- HDPE bottle 650ml.
- Made in EU.



PRE-COMPRESSION
TRIGGER



FINE MIST
SPRAY



Description	Model No.	EAN		Size (L/W/H)	Weight
Wheel Cleaner	31418	5060428031418		5.5 x 11 x 26.5 cm	0.73 kg
Packaging	MOQ	PCS/CTN	Weight	Size (L/W/H)	Carton CBM
Box	1.500	12	9.18 kg	23.5 x 34.5 x 28.6 cm	0.023

Changes in the interest of technical progress may mean the product varies from that shown here.

MICHELIN ADVANCED WHEEL CLEANER

- Acid-free.
- Safe on all types of wheels.
- Colour change formula.
- PH-balanced.
- Pre-compression trigger.
- REACH standard.
- HDPE bottle 650ml.
- Made in EU.



PRE-COMPRESSION
TRIGGER



FINE MIST
SPRAY



Description	Model No.	EAN		Size (L/W/H)	Weight
Advanced Wheel Cleaner	32163	5060428032163		5.5 x 11 x 26.5 cm	0.73 kg
Packaging	MOQ	PCS/CTN	Weight	Size (L/W/H)	Carton CBM
Box	1.500	12	9.18 kg	23.5 x 34.5 x 28.6 cm	0.024

Changes in the interest of technical progress may mean the product varies from that shown here.

MICHELIN FABRIC CLEANER

- Suitable for all types of upholstery.
- Neutralizes bad odours.
- Pre-compression trigger.
- REACH standard.
- HDPE bottle 650ml.
- Made in EU.



PRE-COMPRESSION
TRIGGER



FINE MIST
SPRAY



Description	Model No.	EAN		Size (L/W/H)	Weight
Fabric Cleaner	31425	5060428031425		5.5 x 11 x 26.5 cm	0.73 kg
Packaging	MOQ	PCS/CTN	Weight	Size (L/W/H)	Carton CBM
Box	1.500	12	9.16 kg	23.5 x 34.5 x 28.6 cm	0.023

Changes in the interest of technical progress may mean the product varies from that shown here.

MICHELIN FAST SHINE WAX

- Suitable on all surfaces.
- Effortless application.
- Leaves a slick glossy finish.
- Protective polymers prevent future dirt build-up.
- Pre-compression trigger.
- REACH standard.
- HDPE bottle 650ml.
- Made in EU.



PRE-COMPRESSION
TRIGGER



FINE MIST
SPRAY



Description	Model No.	EAN		Size (L/W/H)	Weight
Fast Shine Wax	31951	5060428031951		5.5 x 11 x 26.5 cm	0.74 kg
Packaging	MOQ	PCS/CTN	Weight	Size (L/W/H)	Carton CBM
Box	1.500	12	9.16 kg	23.5 x 34.5 x 28.6 cm	0.023

Changes in the interest of technical progress may mean the product varies from that shown here.

MICHELIN WET WAX

- Maintains finish between waxing.
- Speeds up drying time.
- Easy to use.
- Triple Action Formula.
- Pre-compression trigger.
- REACH standard.
- HDPE bottle 650ml.
- Made in EU.



PRE-COMPRESSION
TRIGGER



FINE MIST
SPRAY



Product Name	Model No.	EAN		Size (L/W/H)	Weight
Wet Wax	31968	5060428031968		5.5 x 11 x 26.5 cm	0.72 kg
Packaging	MOQ	PCS/CTN	Weight	Size (L/W/H)	Carton CBM
Box	1.500	12	9.16 kg	23.5 x 34.5 x 28.6 cm	0.023

Changes in the interest of technical progress may mean the product varies from that shown here.

MICHELIN CLEAN AIR

- High ethanol content.
- Kills germs and viruses.
- Cleans car air conditioning system.
- No tools required.
- 15 minutes start to finish.
- REACH standard.
- 150 ml.
- Made in EU.



MODEL No. 32729

FRESH
SCENT

MODEL No. 31449

ARCTIC
SCENT

MODEL No. 32705

BLACK
SCENT

MODEL No. 32712

VANILLA
SCENT



Description	Model No.	EAN		Size (L/W/H)	Weight
Clean Air	31449	5060428031449		5.4 x 5.4 x 14.7 cm	0.16 kg
Packaging	MOQ	PCS/CTN	Weight	Size (L/W/H)	Carton CBM
Box	10.008	24	4.1 kg	24 x 36 x 20 cm	0.017

Changes in the interest of technical progress may mean the product varies from that shown here.

MICHELIN SUPER CONCENTRATED SCREEN WASH

- Makes up to 25 liters.
- Removes dirt and insects.
- REACH standard.
- HDPE bottle 250ml.
- Made in EU.



MODEL No. 31999

FOREST
SCENT

MODEL No. 31975

LEMON
SCENT



Description	Model No.	EAN		Size (L/W/H)	Weight
Super Concentrated Screen Wash	31999	5060428031999		5 x 5 x 20.5 cm	0.27 kg
Packaging	MOQ	PCS/CTN	Weight	Size (L/W/H)	Carton CBM
Box	4.008	24	7.2 kg	26.7 x 40 x 21 cm	0.022

Changes in the interest of technical progress may mean the product varies from that shown here.

MICHELIN CAR SHAMPOO SUPER CONCENTRATED

- Removes dirt and insects.
- Up to 30 washes.
- REACH standard.
- HDPE bottle 1l.
- Made in EU.

ORANGE
SCENT



Description	Model No.	EAN		Size (L/W/H)	Weight
Car Shampoo Super Concentrated	31456	5060428031456		6.5 x 12 x 23 cm	1.1 kg
Packaging	MOQ	PCS/CTN	Weight	Size (L/W/H)	Carton CBM
Box	1.500	12	13.45 kg	24.5 x 38 x 24.3 cm	0.023

Changes in the interest of technical progress may mean the product varies from that shown here.

MICHELIN LEATHER CLEANER

- 3 in 1 Formula.
- Prevents drying and cracking.
- Contains avocado oil.
- REACH standard.
- HDPE bottle 250ml.
- Made in EU.



Description	Model No.	EAN		Size (L/W/H)	Weight
Leather Cleaner	32187	5060428032187		4.5 x 9 x 15.5 cm	0.26 kg
Packaging	MOQ	PCS/CTN	Weight	Size (L/W/H)	Carton CBM
Box	4.008	24	7.2 kg	23 x 38 x 16 cm	0.014

Changes in the interest of technical progress may mean the product varies from that shown here.

MICHELIN SHAMPOO & WAX

- Biodegradable.
- Cleans, shines and protects.
- Orange scent.
- REACH standard.
- HDPE bottle 250ml.
- Made in EU.

ORANGE
SCENT



Description	Model No.	EAN		Size (L/W/H)	Weight
Shampoo & Wax	32217	5060428032217		4.5 x 9 x 15.5 cm	0.3 kg
Packaging	MOQ	PCS/CTN	Weight	Size (L/W/H)	Carton CBM
Box	4.008	24	7.2 kg	23 x 38 x 16 cm	0.014

Changes in the interest of technical progress may mean the product varies from that shown here.

MICHELIN GLOSS FINISH TRIM RESTORER

- Protects and revives colour.
- Interior and exterior application.
- REACH standard.
- HDPE bottle 250ml.
- Made in EU.



Description	Model No.	EAN		Size (L/W/H)	Weight
Gloss Finish Trim Restorer	32194	5060428032194		4.5 x 9 x 15.5 cm	0.3 kg
Packaging	MOQ	PCS/CTN	Weight	Size (L/W/H)	Carton CBM
Box	4.008	24	7.2 kg	23 x 38 x 16 cm	0.014

Changes in the interest of technical progress may mean the product varies from that shown here.

MICHELIN

MATT FINISH TRIM RESTORER

- Protects and revives colour.
- Interior and exterior application.
- REACH standard.
- HDPE bottle 250ml.
- Made in EU.



Description	Model No.	EAN		Size (L/W/H)	Weight
Matt Finish Trim Restorer	32200	5060428032200		4.5 x 9 x 15.5 cm	0.3 kg
Packaging	MOQ	PCS/CTN	Weight	Size (L/W/H)	Carton CBM
Box	4.008	24	7.2 kg	23 x 38 x 16 cm	0.014

Changes in the interest of technical progress may mean the product varies from that shown here.

MICHELIN SCRATCH REPAIR PEN

- Reduces visible signs of scratch by 96%.
- Works on all paint types and colours.
- Dry in 10 minutes at normal temperatures colder conditions may increase to 20 minutes.
- Easy to apply scratch pen.
- REACH standard.
- Made in UK.



SUITABLE FOR ANY COLOUR



QUICK DRYING



WATERPROOF



Description	Model No.	EAN		Size (W/H)	Weight
Scratch Repair Pen	70149	5060564170149		1.5 x 14 cm	0.05 kg
Packaging	MOQ	PCS/CTN	Weight	Size (L/W/H)	Carton CBM
Clamshell	2340	6	0.372 kg	13 x 13 x 21.5 cm	0.004

Changes in the interest of technical progress may mean the product varies from that shown here.

MICHELIN EMERGENCY PUNCTURE REPAIR

- No tools required.
- Immediate repair.
- Reinflates tyre to safe pressure.
- Passenger and small SUV's only.
- For all tyres up to 245/45 R17.
- Exclusive MICHELIN formula.
- 500ml.



Description	Model No.	EAN		Size (L/W/H)	Weight
Emergency Puncture Repair	32699	5060428032699		6.5 x 6.5 x 23 cm	0.54 kg
Packaging	MOQ	PCS/CTN	Weight	Size (L/W/H)	Carton CBM
Box	7.008	12	6.44 kg	30 x 23 x 24 cm	0.017

Changes in the interest of technical progress may mean the product varies from that shown here.

MICHELIN TYRE SHINE

- No-fling formula.
- Anti-static.
- Glossy look.
- REACH standard.
- 520ml.
- Made in EU.



Description	Model No.	EAN		Size (L/W/H)	Weight
Tyre Shine	31432	5060428031432		6.6 x 6.6 x 28.4 cm	0.475 kg
Packaging	MOQ	PCS/CTN	Weight	Size (L/W/H)	Carton CBM
Box	10.008	12	6 kg	26.7 x 28.9 x 29.5 cm	0.023

Changes in the interest of technical progress may mean the product varies from that shown here.

MICHELIN WHEEL BRUSH 28 CM

- Rubber soft grip handle.
- Made in EU.



Description	Model No.	EAN		Size (L/H/W)	Weight
Wheel Brush 28cm	32446	5060428032446		6.5 x 28.5 x 6.5 cm	0.18 kg
Packaging	MOQ	PCS/CTN	Weight	Size (L/H/W)	Carton CBM
Hang Tag	1,536	16	2.94 kg	40 x 15 x 30 cm	0.018

Changes in the interest of technical progress may mean the product varies from that shown here.

MICHELIN WASH BRUSH 36 CM

- Rubber soft grip handle.
- Long reach for getting under wheel arches.
- Made in EU.



Description	Model No.	EAN		Size (L/H/W)	Weight
Wash Brush Round 36cm	32453	5060428032453		10 x 36 x 8 cm	0.29 kg
Packaging	MOQ	PCS/CTN	Weight	Size (L/H/W)	Carton CBM
Hang Tag	1,536	8	2.32 kg	40 x 15 x 30 cm	0.018

Changes in the interest of technical progress may mean the product varies from that shown here.

MICHELIN SYNTHETIC CHAMOIS CLOTH

- 80% viscose,
20% polypropylene.
- 40x30 cm.
- Made in EU.



DRY



Description	Model No.	EAN		Size (H/W)	Weight
Synthetic Chamois Cloth	32460	5060428032460		40 x 30 cm	0.04 kg
Packaging	MOQ	PCS/CTN	Weight	Size (L/H/W)	Carton CBM
Hang Tag	4,928	44	1.82 kg	30 x 18 x 23 cm	0.012

Changes in the interest of technical progress may mean the product varies from that shown here.

MICHELIN GLASS CLOTH

- Use with MICHELIN Glass Cleaner.
- 80% viscose, 20% polyamide.
- 40x40 cm.
- 240 g/m².
- Made in EU.



FINISH



Description	Model No.	EAN		Size (H/W)	Weight
Glass Cloth	32477	5060428032477		40 x 40 cm	0.06 kg
Packaging	MOQ	PCS/CTN	Weight	Size (L/H/W)	Carton CBM
Hang Tag	4,928	44	2.75 kg	30 x 18 x 23 cm	0.012

Changes in the interest of technical progress may mean the product varies from that shown here.

MICHELIN POLISHING CLOTHS

- Use with MICHELIN Fast Shine Wax.
- 80% viscose, 20% polyamide.
- Lint-free.
- 32x32 cm.
- 200 g/m².
- Made in EU.



Description	Model No.	EAN		Size (H/W)	Weight
Polishing Cloths	32484	5060428032484		32 x 32 cm	0.06 kg
Packaging	MOQ	PCS/CTN	Weight	Size (L/H/W)	Carton CBM
Hang Tag	4,928	44	2.72 kg	30 x 18 x 23 cm	0.012

Changes in the interest of technical progress may mean the product varies from that shown here.

MICHELIN MICROFIBRE TOWELS

- Use with MICHELIN's Auto Expert range of car care products.
- Perfect for any task, inside or out.
- 40x40 cm.
- 320 g/m².
- Made in EU.



FINISH



x3



Description	Model No.	EAN		Size (H/W)	Weight
Microfibre Towels	32491	5060428032491		40 x 40 cm	0.20 kg
Packaging	MOQ	PCS/CTN	Weight	Size (L/H/W)	Carton CBM
Hang Tag	1,024	16	3.25 kg	39 x 21 x 30 cm	0.025

Changes in the interest of technical progress may mean the product varies from that shown here.

MICHELIN WASH GLOVE

- Use with MICHELIN Super Concentrated Shampoo or MICHELIN Shampoo & Wax.
- 80% polyester, 20% polyamide.
- Made in EU.



WASH



Description	Model No.	EAN		Size (L/H/W)	Weight
Wash Glove	32507	5060428032507		3 x 25 x 17 cm	0.11 kg
Packaging	MOQ	PCS/CTN	Weight	Size (L/H/W)	Carton CBM
Hang Tag	1,600	18	1.93 kg	39 x 21 x 30 cm	0.025

Changes in the interest of technical progress may mean the product varies from that shown here.

MICHELIN WASH SPONGE

- Use with MICHELIN range of shampoos.
- Polyurethane foam.
- 22.6x12.5x7.5 cm.
- Made in EU.



WASH

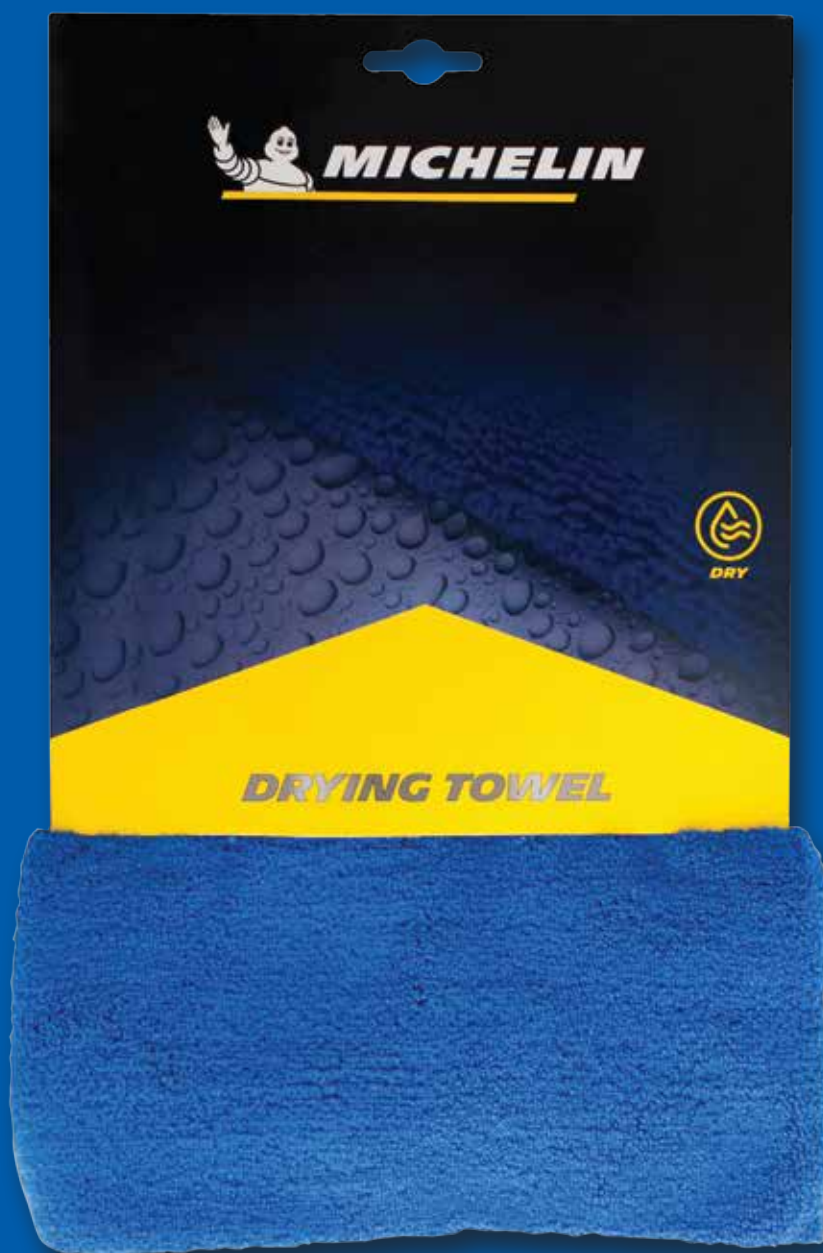


Description	Model No.	EAN		Size (L/H/W)	Weight
Wash Sponge	32514	5060428032514		22.6 x 12.5 x 7.5 cm	0.06 kg
Packaging	MOQ	PCS/CTN	Weight	Size (L/H/W)	Carton CBM
Shrink Wrap	9,984	12	0.67 kg	39 x 21 x 30 cm	0.025

Changes in the interest of technical progress may mean the product varies from that shown here.

MICHELIN DRYING TOWEL

- High-quality microfibre.
- Guaranteed unique absorbency, softness and durability.
- 70% polyester, 30% polyamide.
- 90x60 cm.
- 600 g/m².
- Made in EU.



Description	Model No.	EAN		Size (H/W)	Weight
Drying Towel	32521	5060428032521		90 x 60 cm	0.39 kg
Packaging	MOQ	PCS/CTN	Weight	Size (L/H/W)	Carton CBM
Hang Tag	768	16	6.20 kg	60 x 30 x 40 cm	0.072

Changes in the interest of technical progress may mean the product varies from that shown here.

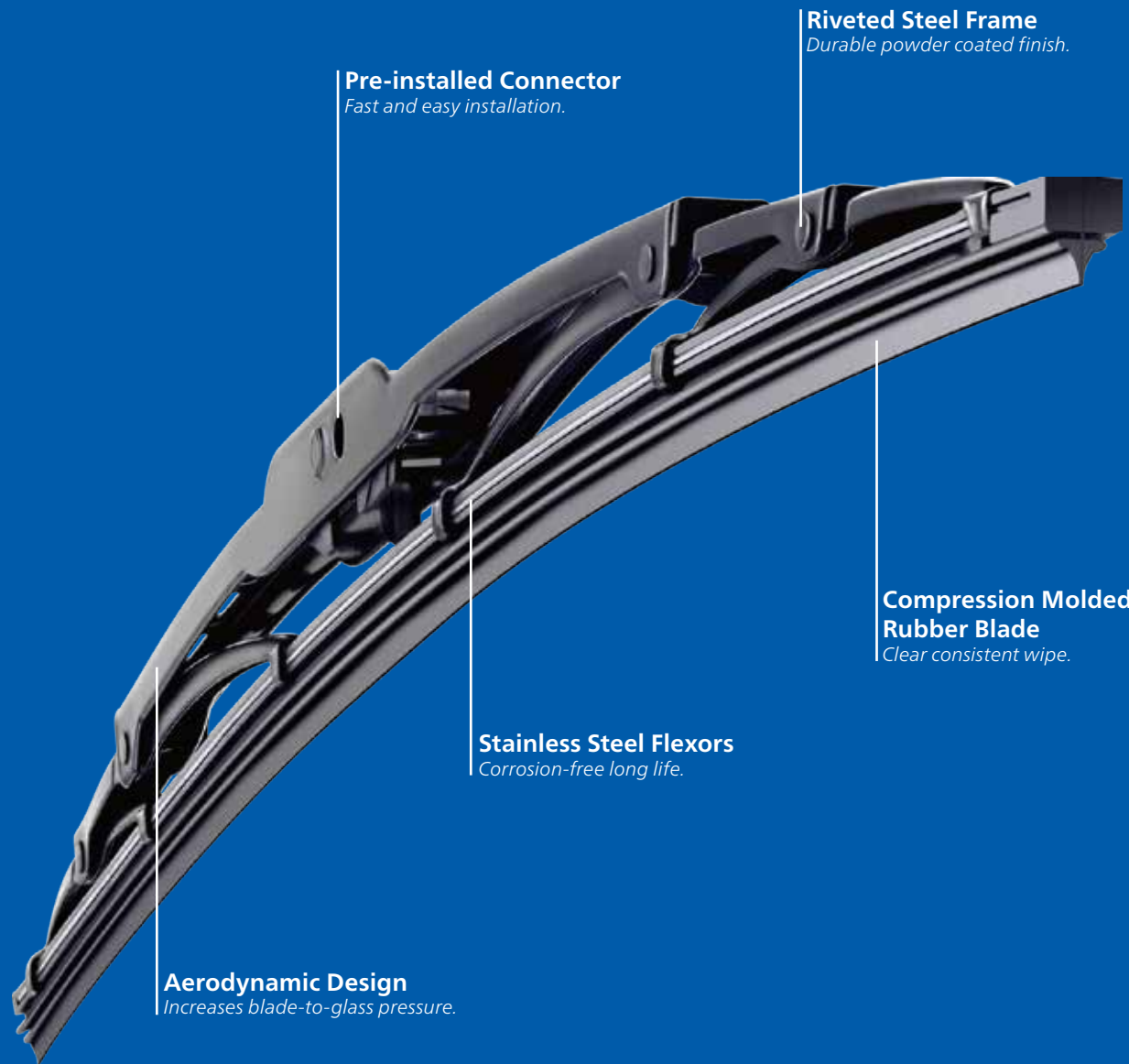
WIPER BLADES

GET A CLEAR VIEW OF A ROAD AHEAD.

Michelin has always had a strong commitment to improving driver safety and MICHELIN wiper blades reinforce that commitment.



MICHELIN RAINFORCE™ STANDARD WIPER BLADES



Pre-installed Connector
Fast and easy installation.

Riveted Steel Frame
Durable powder coated finish.

Compression Molded Rubber Blade
Clear consistent wipe.

Stainless Steel Flexors
Corrosion-free long life.

Aerodynamic Design
Increases blade-to-glass pressure.



HEAVY RAIN



SLEET SNOW



EXTREME HEAT



Description		Available sizes in inches			Available sizes in centimeters	
Rainforce™ Standard Wiper Blades		14, 15, 16, 17, 18, 19, 20, 21, 22, 24 & 28			40, 43, 45, 48, 50, 53, 55, 60, 65 & 70	
Packaging	MOQ	PCS/CTN	Weight	Size (L/H/W)	Carton CBM	
Box	15.000 MIX*	5	0.74-1.68 kg	61.5 x 10.9 x 7.2 cm - 79.5 x 10.9 x 7.2 cm	0.005 - 0.006	

Changes in the interest of technical progress may mean the product varies from that shown here.
* All sizes are included.

MICHELIN RAINFORCE™ HYBRID WIPER BLADES



EZ-LOK™ Connectors
Fast and easy installation.

Fit-Right Design
Adjust to windscreen curve
- better surface contact.

Flexible Blade Design
Holds blade firmly against glass.
Protects mechanism from clogging
in snow and ice.

Durable Rubber Blade
Quiet operation - long life.



HEAVY RAIN



SLEET SNOW



EXTREME HEAT



Description		Available sizes in inches			Available sizes in centimeters	
Rainforce™ Hybrid Wiper Blades		14, 15, 16, 17, 18, 19, 20, 21, 22, 24 & 28			40, 43, 45, 48, 50, 53, 55, 60, 65 & 70	
Packaging	MOQ	PCS/CTN	Weight	Size (L/H/W)	Carton CBM	
Box	15.000 MIX*	5	0.54 - 0.82 kg	61 x 15.8 x 7 cm - 79 x 15.8 x 7 cm	0.007 - 0.009	

Changes in the interest of technical progress may mean the product varies from that shown here.
* All sizes are included.

COMING
SOON

MICHELIN REAR WIPER BLADES



WHEEL COVERS

Beside the modern design, MICHELIN wheel covers are all equipped with NVS - Night Vision Security system that is exclusive to Michelin, and are easy to fit and clean.



MICHELIN WHEEL COVER NARDO

- NVS - Night Vision Security. Exclusive MICHELIN design.
- Permanent fixing via spring-loaded metal ring.
- Quick and easy to fit.
- High quality ABS.
- Easy to clean.



SILVER



WHITE



SILVER-BLACK



BLACK



Description		Available sizes in inches			Available sizes in centimeters	
Wheel Cover Nardo		13, 14, 15, & 16			33, 35.56, 38.1 & 40.64	
Packaging	MOQ	PCS/CTN	Weight	Size (L/H/W)	Carton CBM	
Box	100	5	10.61 - 14.07 kg	96 x 37 x 37.5 cm - 94 x 45 x 45.5 cm	0.133 - 0.192	

Changes in the interest of technical progress may mean the product varies from that shown here.

MICHELIN WHEEL COVER VERON

- NVS - Night Vision Security. Exclusive MICHELIN design.
- Permanent fixing via spring-loaded metal ring.
- Quick and easy to fit.
- High quality ABS.
- Easy to clean.



SILVER - BLACK



Description		Available sizes in inches		Available sizes in centimeters	
Wheel Cover Veron		13, 14, 15, 16 & 17		33, 35.56, 38.1, 40.64 & 43.18	
Packaging	MOQ	PCS/CTN	Weight	Size (L/H/W)	Carton CBM
Box	100	5	9.93 - 15.66 kg	96 x 37 x 37.5 cm - 89.5 x 49.5 x 49.5 cm	0.133 - 0.219

Changes in the interest of technical progress may mean the product varies from that shown here.

MICHELIN WHEEL COVERS

NEW
PRODUCT

NARDO PRO



BLACK



SILVER - BLACK



SILVER



WHITE



NIGHT VISION
SYSTEM



WHEEL COVER

COSMO



BLACK



GREY



SILVER - BLACK



SILVER



COSMO PRO



BLACK



GREY



SILVER

CALIBER



BLACK



SILVER - BLACK



SILVER



WHITE

REVO



SILVER - BLACK

Changes in the interest of technical progress may mean the product varies from that shown here.
All models available in 13, 14, 15, 16 & 17 inches.

SOHO



SILVER - BLACK

References and model
availability upon request.

WINTER PRODUCTS

Safety is never more important than in winter driving conditions.
The MICHELIN range of winter products are essential for winter travel.



MICHELIN DE-ICER

- Effective down to -40°C.
- Fast acting.
- Wiper safe.
- Streak-free Formula.
- Pre-compression trigger.
- REACH standard.
- HDPE bottle 650ml.
- Made in EU.



PRE-COMPRESSION
TRIGGER



FINE MIST
SPRAY



Description	Model No.	EAN		Size (L/W/H)	Weight
De-Icer	31319	5060428031319		5.5 x 11 x 26.5 cm	0.73 kg
Packaging	MOQ	PCS/CTN	Weight	Size (L/W/H)	Carton CBM
Box	10.008	12	9.18 kg	23.5 x 34.5 x 28.6 cm	0.023

Changes in the interest of technical progress may mean the product varies from that shown here.

MICHELIN SNOW BRUSH HANDY

- Particularly strong and attractive snowbrush / ice scraper combination.
- Polycarbonate Scraper (unbreakable until -30° C).
- Alu-Tubes with Soft Grip for greater comfort.



Description	Model No.	EAN		Size (L/H/W)	Weight
Snow Brush Handy	6466MCH	5060428031029		50 x 11 x 9 cm	0.32 kg
Packaging	MOQ	PCS/CTN	Weight	Size (L/H/W)	Carton CBM
Box	660	10	0.67 kg	39 x 21 x 30 cm	0.025

Changes in the interest of technical progress may mean the product varies from that shown here.

MICHELIN SNOW BRUSH TELESCOPIC

- Particularly strong and attractive snowbrush / ice scraper combination.
- Polycarbonate Scraper (unbreakable until -30° C).
- Alu-Tubes with Soft Grip for greater comfort.
- Innovative telescopic system (up to 110 cm).
- Patented swivel head.



Description	Model No.	EAN		Size (L/H/W)	Weight
Snow Brush Telescopic	6866MCH	5060428031036		78 x 11.5 x 9 cm	0.58 kg
Packaging	MOQ	PCS/CTN	Weight	Size (L/H/W)	Carton CBM
Box	480	15	8.76 kg	85 x 21 x 33 cm	0.059

Changes in the interest of technical progress may mean the product varies from that shown here.

MICHELIN ICE SCRAPER

- Highly efficient ice scraper with convex, polycarbonate blade which can be used from all four sides.
- In a modern design and with a soft grip for more comfort.



Description	Model No.	EAN		Size (L/H/W)	Weight
Ice Scraper	6961MCH	5060428031043		22 x 40 x 10 cm	0.09 kg
Packaging	MOQ	PCS/CTN	Weight	Size (L/H/W)	Carton CBM
Box	2,200	20	1.73 kg	39 x 21 x 23 cm	0.019

Changes in the interest of technical progress may mean the product varies from that shown here.

MICHELIN EMERGENCY SHOVEL WITH ICE SCRAPER

- Handy emergency shovel.
- Made of polycarbonate.
- With integrated ice scraper.



Description	Model No.	EAN		Size (L/H/W)	Weight
Emergency Shovel With Ice Scraper	6986MCH	5060428031050		60 x 5 x 17 cm	0.33kg
Packaging	MOQ	PCS/CTN	Weight	Size (L/H/W)	Carton CBM
Box	480	10	3.35 kg	50 x 21 x 29 cm	0.030

Changes in the interest of technical progress may mean the product varies from that shown here.

MICHELIN ICE SCRAPER WITH MITT

- Polycarbonate Scraper (unbreakable until -30° C).
- Equipped with a round handle for a better grip.
- Finished with a double fleece glove, made with an impermeable coated polyester cloth.
- The scraper is 10 cm wide with a flat blade and a clawed face.



Description	Model No.	EAN		Size (L/H/W)	Weight
Ice Scraper With Mitt	6484MCH	5060428032637		38 x 3.5 x 18.5 cm	0.16 kg
Packaging	MOQ	PCS/CTN	Weight	Size (L/H/W)	Carton CBM
Box	1,280	20	3.23 kg	38.5 x 23.5 x 29.5 cm	0.027

Changes in the interest of technical progress may mean the product varies from that shown here.

MICHELIN PROMO DISPLAY FOR BRUSHES AND ICE SCRAPERS



Description		Model No.	Size (L/H/W)	Weight
Promo Display For Winter Products		696DISPLAY	104 x 2.2 x 70 cm	1.63 kg
MOQ	PCS/CTN	Weight	Size (L/H/W)	Carton CBM
1	15	24.39 kg	104 x 32 x 70 cm	0.233



Description		Model No.	Size (L/H/W)	Weight
Stand-Alone Winter Product Display		696STDISPLAY	110 x 4.2 x 64 cm	2.44 kg
MOQ	PCS/CTN	Weight	Size (L/H/W)	Carton CBM
1	15	36.58 kg	110 x 54 x 64 cm	0.380



Description		Model No.	Size (L/H/W)	Weight
Floor Display Snow Brush		696FLDISPLAY	110 x 2.5 x 60 cm	0.95 kg
MOQ	PCS/CTN	Weight	Size (L/H/W)	Carton CBM
1	15	14.28 kg	110 x 30 x 60 cm	0.198

Changes in the interest of technical progress may mean the product varies from that shown here.

MICHELIN

SNOW CHAINS EASY GRIP EVO

- Unique advanced composite rubber construction.
- Network structure interspersed with steel clips.
- Light weight.
- Compatible with ABS and ESP devices.
- NVS Night Vision System.
- Designed for short periods of use at low speeds.
- Homologated for European alpine use, TUV / ONORM approved.
- 87 tyre sizes covered with only 19 references.



Description	Model No.	EAN		Size (L/H/W)	Weight
Snow Chains Easy Grip Evo	Z424004	3221320083017		34.5 x 26.5 x 16 cm	1.65 - 2.7 kg
Packaging	MOQ	PCS/CTN	Weight	Size (L/H/W)	Carton CBM
Box	300	5	8.7 - 13.8 kg	59 x 45 x 36 cm	0.084

Changes in the interest of technical progress may mean the product varies from that shown here.

MICHELIN

SNOW SOCKS SOS GRIP

- Textile snow sock.
- Compact, easy and quick to fit and remove.
- Unique design.
- Optimum performance on snow and ice.
- Light weight.
- Compatible with ABS and ESP devices.
- NVS Night Vision System.
- Designed for short periods of use at low speeds.
- Minimum noise or vibration during use.
- 133 tyre sizes covered with only 10 references.



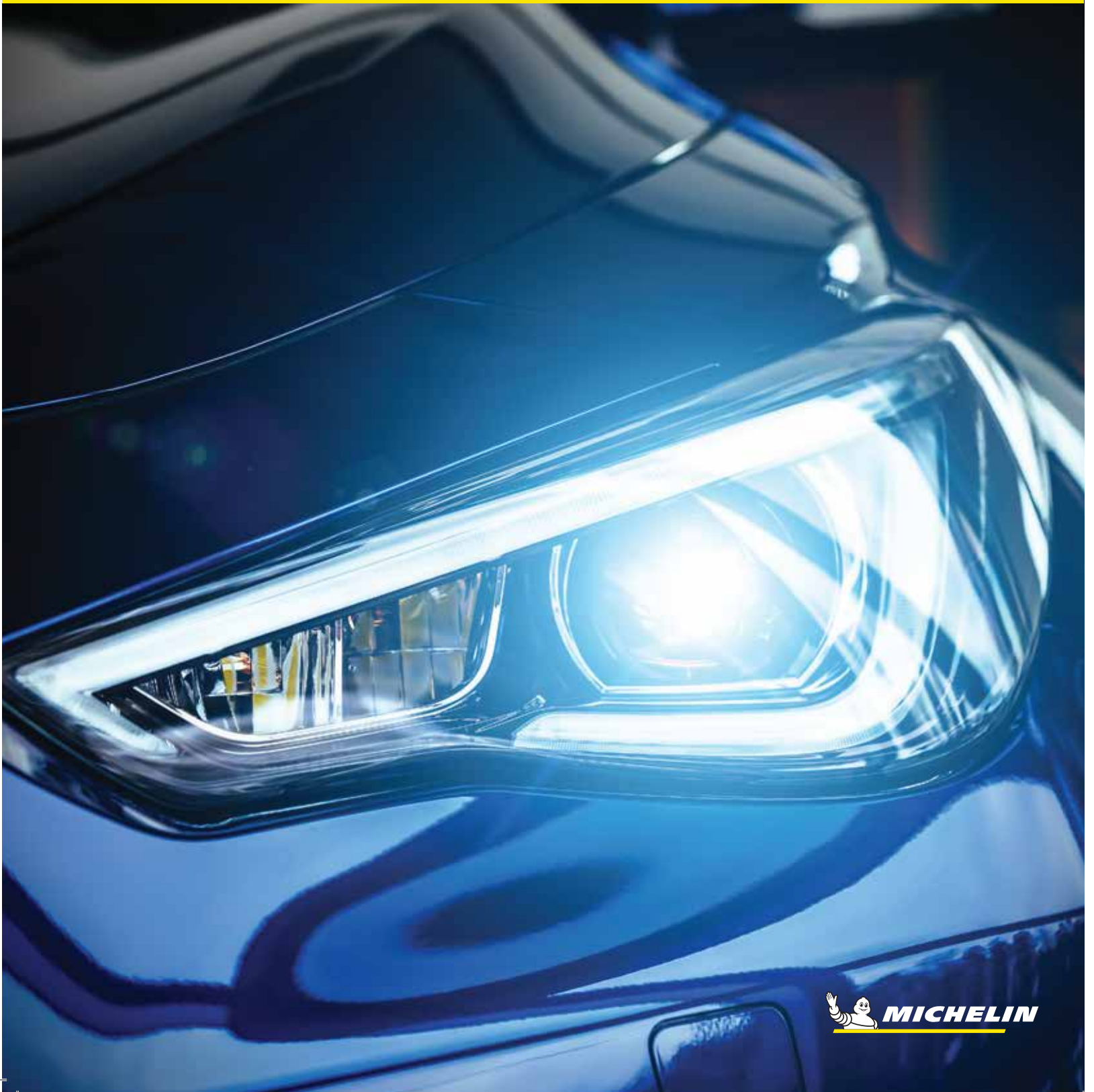
Description	Model No.	EAN		Size (L/H/W)	Weight
Snow Socks Sos Grip	ZZ22C01	3221320084014		34 x 22 x 9 cm	1.1 - 1.7 kg
Packaging	MOQ	PCS/CTN	Weight	Size (L/H/W)	Carton CBM
Box	500	5	5.85 - 8.95 kg	40 x 30 x 30 cm	0.036

Changes in the interest of technical progress may mean the product varies from that shown here.

**NEW
PRODUCT**

AUTOMOTIVE LIGHTING

Have a bright view of the road ahead.



**NEW
PRODUCT**

MICHELIN H1 LONG LIFE SINGLE PACK

- Duration: up to 650 hours.
- Power: 12V, 55W.
- Lumination: 1550 lm.
- Product Type: Halogen Lights.
- Headlamp.
- Lighting color: 



Description	Model No.	EAN		Size (L/H/W)	Weight
H1 12V, 55W LONG LIFE Single Pack	32224	5060428032224		9.5 x 2.5 x 13.5 cm	0.014 kg
Packaging	MOQ	PCS / CTN	Weight	Size (L/H/W)	Carton CBM
Blister	5000	100	2.3 kg	71 x 16.5 x 30.5 cm	0.04

Changes in the interest of technical progress may mean the product varies from that shown here.

**NEW
PRODUCT**

MICHELIN H3 LONG LIFE SINGLE PACK

- Duration: up to 650 hours.
- Power: 12V, 55W.
- Lumination: 1450 lm.
- Product Type: Halogen Lights.
- Headlamp.
- Lighting color: 



Description	Model No.	EAN		Size (L/H/W)	Weight
H3 12V, 55W LONG LIFE Single Pack	32231	5060428032231		9.5 x 2.2 x 13.5 cm	0.014 kg
Packaging	MOQ	PCS / CTN	Weight	Size (L/H/W)	Carton CBM
Blister	5000	100	2.3 kg	71 x 16.5 x 30.5 cm	0.04

Changes in the interest of technical progress may mean the product varies from that shown here.

**NEW
PRODUCT**

MICHELIN H4 LONG LIFE SINGLE PACK

- Duration: up to 500 hours.
- Power: 12V, 60/55W.
- Lumination: 1650 lm.
- Product Type: Halogen Lights.
- Headlamp.
- Lighting color: 



Description	Model No.	EAN		Size (L/H/W)	Weight
H4 12V, 60/55W P43T LONG LIFE Single Pack	32248	5060428032248		9.5 x 4.8 x 13.5 cm	0.03 kg
Packaging	MOQ	PCS / CTN	Weight	Size (L/H/W)	Carton CBM
Blister	5000	100	4.3 kg	78.5 x 20.5 x 38.5 cm	0.06

Changes in the interest of technical progress may mean the product varies from that shown here.

**NEW
PRODUCT**

MICHELIN H7 LONG LIFE SINGLE PACK

- Duration: up to 500 hours.
- Power: 12V, 55W.
- Lumination: 1500 lm.
- Product Type: Halogen Lights.
- Headlamp.
- Lighting color: 



Description	Model No.	EAN		Size (L/H/W)	Weight
H7 12V, 55W LONG LIFE Single Pack	32255	5060428032255		9.5 x 3.2 x 13.5 cm	0.02 kg
Packaging	MOQ	PCS / CTN	Weight	Size (L/H/W)	Carton CBM
Blister	5000	100	2.6 kg	58.5 x 17.5 x 45.5 cm	0.05

Changes in the interest of technical progress may mean the product varies from that shown here.

**NEW
PRODUCT**

MICHELIN H4 EXTRA LONG LIFE DOUBLE PACK

- Duration: up to 700 hours.
- Power: 12V, 60/55W.
- Lumination: 1650 lm.
- Product Type: Halogen Lights.
- Headlamp.
- Lighting color: 



Description	Model No.	EAN		Size (L/H/W)	Weight
H4 12V, 60/55W, P43T EXTRA LONG LIFE 130% Double Pack	32286	5060428032286		17.5 x 4.8 x 13.5 cm	0.06 kg
Packaging	MOQ	PCS / CTN	Weight	Size (L/H/W)	Carton CBM
Blister	5000	100	7.7 kg	76 x 24 x 57.5 cm	0.1

Changes in the interest of technical progress may mean the product varies from that shown here.

**NEW
PRODUCT**

MICHELIN H7 EXTRA LONG LIFE DOUBLE PACK

- Duration: up to 1300 hours.
- Power: 12V, 55W.
- Lumination: 1500 lm.
- Product Type: Halogen Lights.
- Headlamp.
- Lighting color: 



Description	Model No.	EAN		Size (L/H/W)	Weight
H7 12V, 55W EXTRA LONG LIFE 130% Double Pack	32293	5060428032293		17.5 x 3.2 x 13.5 cm	0.04 kg
Packaging	MOQ	PCS / CTN	Weight	Size (L/H/W)	Carton CBM
Blister	5000	100	5.3 kg	76 x 23.5 x 43.5 cm	0.08

Changes in the interest of technical progress may mean the product varies from that shown here.

**NEW
PRODUCT**

STEERING WHEEL COVERS

MICHELIN steering wheel covers add a sense of style to any vehicle's interior.



 **MICHELIN**

**NEW
PRODUCT**

MICHELIN STEERING WHEEL COVER PREMIUM

- iFit Stretch™^{M/C} - Enables easier installation and removal.
- Fits most 37-39 cm (14.5"-15.5") steering wheel diameter.
- Protects from spills, stains, fading and dirt.
- Fits most cars, trucks and SUVs.
- Easy to install - no tools needed.



ENABLES EASIER
INSTALLATION AND
REMOVAL



FITS MOST
14.5" - 15.5"
DIAMETER



33245 - GREY



Model No. 33252 - BLACK



Description	Model No.	EAN		Size (L/H/W)	Weight
Steering Wheel Cover Premium	33245 33252	5060428033245 5060428033252		38.1 x 38.1 x 3.1 cm	0.25 kg
Packaging	MOQ	PCS / CTN	Weight	Size (L/H/W)	Carton CBM
Box	1.800	6	1.7 kg	39 x 39 x 22 cm	0.03

Changes in the interest of technical progress may mean the product varies from that shown here.

**NEW
PRODUCT**

MICHELIN STEERING WHEEL COVER PERFORMANCE

- iFit Stretch^{TM/MC} - Enables easier installation and removal.
- Fits most 37-39 cm (14.5"-15.5") steering wheel diameter.
- Protects from spills, stains, fading and dirt.
- Fits most cars, trucks and SUVs.
- Easy to install - no tools needed.



ENABLES EASIER
INSTALLATION AND
REMOVAL



FITS MOST
14.5" - 15.5"
DIAMETER



BLUE STICH



Description	Model No.	EAN		Size (L/H/W)	Weight
Steering Wheel Cover Performance	33269	5060428033269		38.1 x 38.1 x 3.1 cm	0.25 kg
Packaging	MOQ	PCS / CTN	Weight	Size (L/H/W)	Carton CBM
Box	1.800	6	1.7 kg	39 x 39 x 22 cm	0.03

Changes in the interest of technical progress may mean the product varies from that shown here.

MICHELIN VEHICLE VACUUM CLEANER

**NEW
PRODUCT**

- *Multidirection Proyclone System*
- *Stainless steel filter*
- *Anti-dust mite*
- *Input power: 12 V*
- *MAX Vacuum: 4.0 kPa / MAX Power 150 W*
- *4 additional accessories*



**12V
PLUG IN**



**POWERFUL
MOTOR**



**ANTI-DUST
MITE**



Description	Model No.	EAN		Size (L/H/W)	Weight
Vehicle vacuum cleaner	33375	5060428033375		33.08 x 10.25 x 13.95 cm	1.25 kg
Packaging	MOQ	PCS / CTN	Weight	Size (L/H/W)	Carton CBM
Box	2000	8	10 kg	56.5 x 41 x 32 cm	0.0741

Changes in the interest of technical progress may mean the product varies from that shown here.

MICHELIN WIRELESS SMART PHONE HOLDER

**NEW
PRODUCT**

- Wireless charging area
- Infrared Automatic clamps
- Fast charging: 15 W / 100 cm type-c power cable
- Powerful sucker: MAX 18 kg
- Qi certified
- Over-heat and voltage protection
- Two mounting options



ONE TOUCH
OPERATION



15W FAST
CHARGING



INFRARED
AUTOMATIC CLAMPS



POWERFUL SUCKER
MAX. 18KG



Description	Model No.	EAN		Size (L/H/W)	Weight
Smart phone holder	33368	5060428033368		10.5 x 6.78 x 2.29 cm	0.123 kg
Packaging	MOQ	PCS / CTN	Weight	Size (L/H/W)	Carton CBM
Box	3000	24	2.9 kg	47 x 40 x 32 cm	0.06

Changes in the interest of technical progress may mean the product varies from that shown here.

**NEW
PRODUCT**

MICHELIN TOOLS

MICHELIN tools are your trusted partner for any project,
both professional and creative.



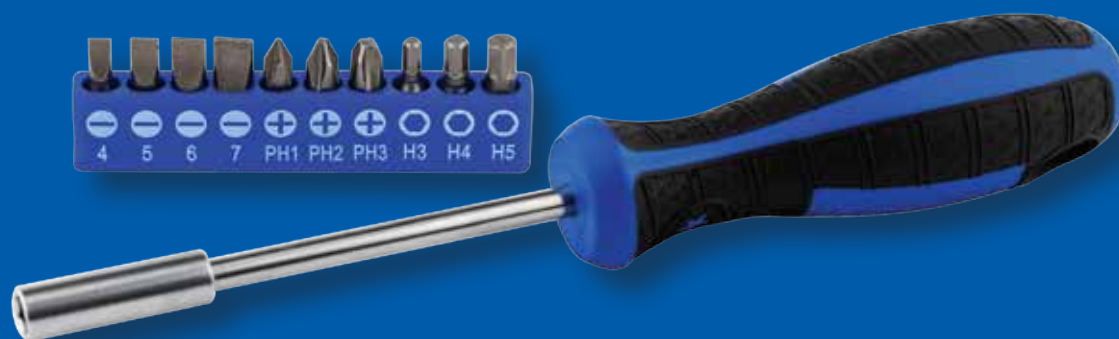
**NEW
PRODUCT**

MICHELIN 11-PIECE BITS SCREWDRIVER SET

- High-quality set ideal for home use.
- Great gift idea and ideal for those DIY tasks at home or in the garage.
- Material: chrome vanadium steel.
- Created with highest technical specification, combines innovative features with ease of use and stylish design.

The Set Contains:

- 1 x bit holder with bi-colour plastic handle.
- 1 x 10 pcs bits with plastic holder, size:
Slotted: 4mm, 5mm, 6mm, 7mm;
Phillips: PH 1, PH 2, PH 3;
Hex: 3mm, 4mm, 5mm.



Description	Model No.	EAN		Size (L/H/W)	Weight
11-Piece Bits Screwdriver Set	33313	5060428033313		28.2 x 4 x 10.2 cm	0.19 kg
Packaging	MOQ	PCS / CTN	Weight	Size (L/H/W)	Carton CBM
Blister	2400	48	9.5 kg	46 x 33 x 30 cm	0.05

Changes in the interest of technical progress may mean the product varies from that shown here.

**NEW
PRODUCT**

MICHELIN 13-PIECE HAND TOOL SET

- High-quality set ideal for home use.
- Great gift idea and ideal for those DIY tasks at home or in the garage.
- Material: chrome vanadium steel.
- Created with highest technical specification, combines innovative features with ease of use and stylish design.

Blister Bag Contains:

- 1 x long nose plier 160mm.
- 1 x knife 9mm.
- 1 x bit holder with bi-colour plastic handle.
- 1x 10 pcs bits with plastic holder, size:
Slotted: 4mm, 5mm, 6mm, 7mm;
Phillips: PH 1, PH2, PH 3;
Hex: 3mm, 4mm, 5mm.



Description	Model No.	EAN		Size (L/H/W)	Weight
13-Piece Hand Tool Set	33320	5060428033320		30.5 x 3.5 x 17.5 cm	0.43 kg
Packaging	MOQ	PCS / CTN	Weight	Size (L/H/W)	Carton CBM
Blister	2400	20	9.6 kg	37 x 40 x 32 cm	0.05

Changes in the interest of technical progress may mean the product varies from that shown here.

**NEW
PRODUCT**

MICHELIN 8-PIECE HAND TOOL SET

- High-quality set ideal for home use.
- Great gift idea and ideal for those DIY tasks at home or in the garage.
- Material: chrome vanadium steel.
- Created with highest technical specification, combines innovative features with ease of use and stylish design.

The Set Contains:

- 1 x long nose plier 160mm.
- 1 x knife 9mm.
- 1 x tape measure 3m x 16mm.
- 1 x stubby claw hammer 8oz.
- 1 x plastic sleeve for hammer.
- 2 x screwdrivers SL 6*100mm, PH 2*100mm.
- 1 x plastic box.



Description	Model No.	EAN		Size (L/H/W)	Weight
8-Piece Hand Tool Set	33337	5060428033337		28.5 x 4.8 x 19 cm	1.02 kg
Packaging	MOQ	PCS / CTN	Weight	Size (L/H/W)	Carton CBM
Box	2400	10	11 kg	41 x 25 x 32 cm	0.03

Changes in the interest of technical progress may mean the product varies from that shown here.

**NEW
PRODUCT**

MICHELIN 29-PIECE HAND TOOL SET

- High-quality set ideal for home use.
- Great gift idea and ideal for those DIY tasks at home or in the garage.
- Material: chrome vanadium steel.
- Created with highest technical specification, combines innovative features with ease of use and stylish design.

Plastic Box Contains:

- 1 x combination plier 160mm.
- 1 x long nose plier 160mm.
- 1 x knife 18mm.
- 1 x tape measure 3m x 16mm.
- 1 x claw hammer 8oz.
- 1 x plastic sleeve for hammer.
- 1 x adjustable wrench 200mm.
- 1 x bit holder with bi-colour plastic handle.
- 1 x 10 pcs bits with plastic holder, size:
Slotted: 4mm, 5mm, 6mm, 7mm;
Phillips: PH 1, PH 2, PH 3;
Hex: 3mm, 4mm, 5mm;
Pozi: PZ 1, PZ 2, PZ 3;
Torx: T 10, T 15, T 20, T 25, T 27, T 30, T 40.
- 1 x plastic box.



Description	Model No.	EAN		Size (L/H/W)	Weight
29-Piece Hand Tool Set	33344	5060428033344		29.2 x 6.6 x 22.6 cm	1.92 kg
Packaging	MOQ	PCS / CTN	Weight	Size (L/H/W)	Carton CBM
Box	2400	6	12.1 kg	40 x 25 x 30.5 cm	0.03

Changes in the interest of technical progress may mean the product varies from that shown here.

MICHELIN MEASURING TAPE

NEW
Product

- High-quality flexible measuring tape.
- Material: stainless steel.



Description	Model No.	EAN		Size (L/H/W)	Weight
Measuring Tape	33351	5060428033351		6.5 x 3.8 x 6.2 cm	0.1 kg
Packaging	MOQ	PCS / CTN	Weight	Size (L/H/W)	Carton CBM
Box	3000	120	14 kg	36 x 29 x 26 cm	0.03

Changes in the interest of technical progress may mean the product varies from that shown here.

**MANUFACTURED AND DISTRIBUTED
UNDER LICENSE BY ML DIRECT LTD.**

UK OFFICE:

FEDERATION HOUSE,
224 QUEENSFERRY ROAD,
EDINBURGH EH4 2BN

SERBIAN OFFICE:

PUT ZA OVCU 1G,
11211 BELGRADE

CONTACT:

ENQUIRIES@MLDIRECTBUY.COM

WWW.MICHELIN-LIFESTYLE.COM

©2021 MICHELIN.

MICHELIN AND/OR THE MICHELIN MAN DEVICE AND/OR BIBENDUM
ARE TRADEMARK(S) OWNED BY, AND USED WITH THE PERMISSION OF, THE MICHELIN GROUP.

